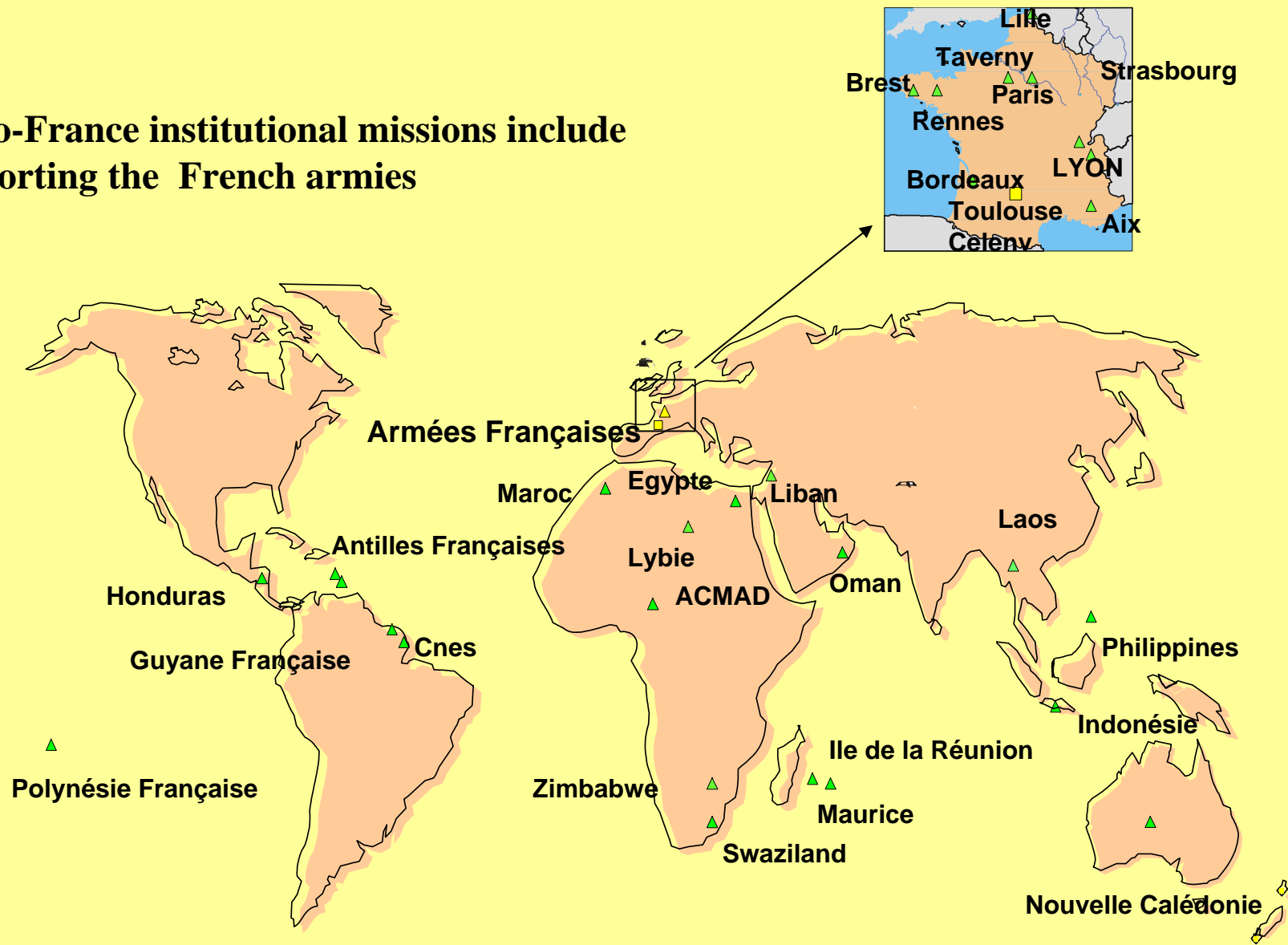


Meteorological visualisation applications

Definition of Decision Aid Products for military support

Brigitte Benech, Meteo-France

Meteo-France institutional missions include supporting the French armies



Wednesday, 16 November 05
Brigitte Bénech, M-Françoise Voidrot

Tenth workshop on Meteorological Operational
Systems





- Meteo-France has to develop and maintain tools which can be used by armies in different places, under various material conditions.
- Representatives of the 3 forces (land, air or naval) and of Meteo-France have worked together to specify some needs of the armies, as much for occasional operations as for met services on permanent bases.

Context

Requirements

To be able to analyse in real time how military decisions can be impacted by meteorological conditions.

Constraints

Telecommunications, reliability, delays,...

Means

Data bases
Productions of specific data
Means of diffusion
Technical skill
Consulting/studies
Training
Operational Support
Men

Requirements

Data?

Kind of data, spatial extent, format, data amount

Where?

France, Europe, Afrique, Asia...

How?

Retim 2000, Retim Afrique, Inmarsat, Syracuse, Direct satellite reception, dedicated line, Internet...

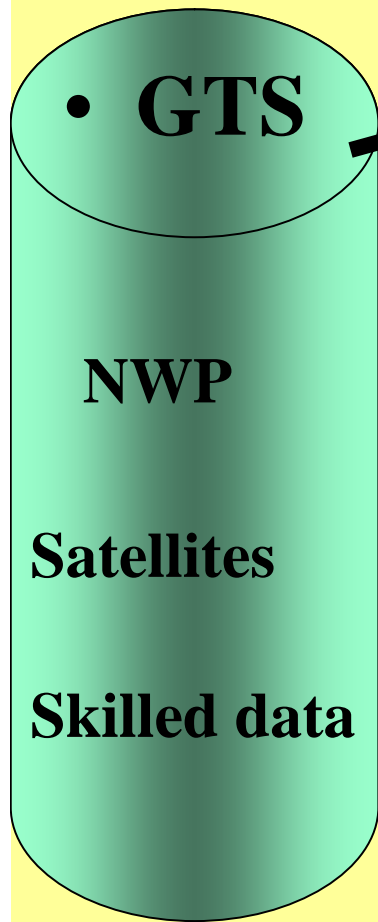
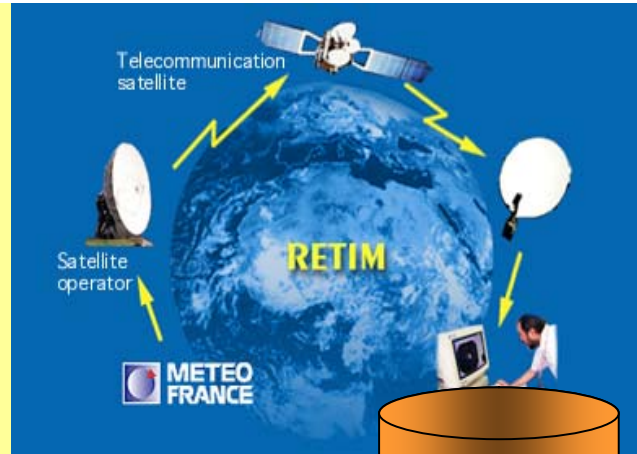
What for? To whom?

Forecasters, decision makers

Tool(s)

Synergie, dedicated web site, PIC, IAA (access on request)...

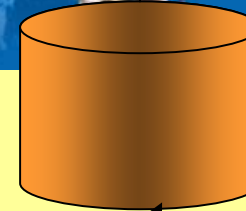
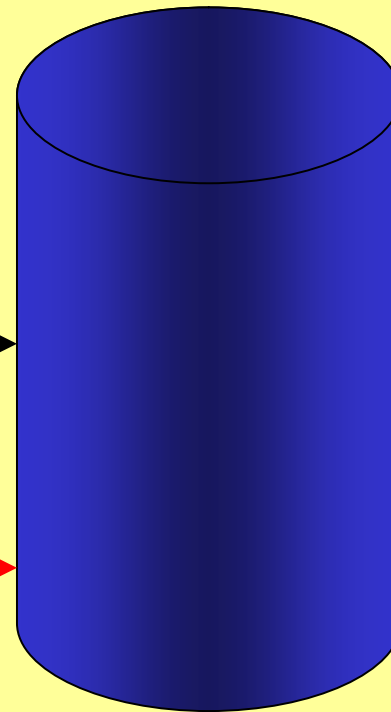
Data flow



Retim

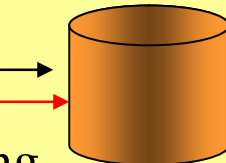
non
military,
all but
Retim

« military »
all but
Retim



All but Retim
Syracuse, ...

Data flow depending
on density of
operations/ Narrow
bandwidth



*Measures
in situ*

Météo-France

Headquarters

Theatres





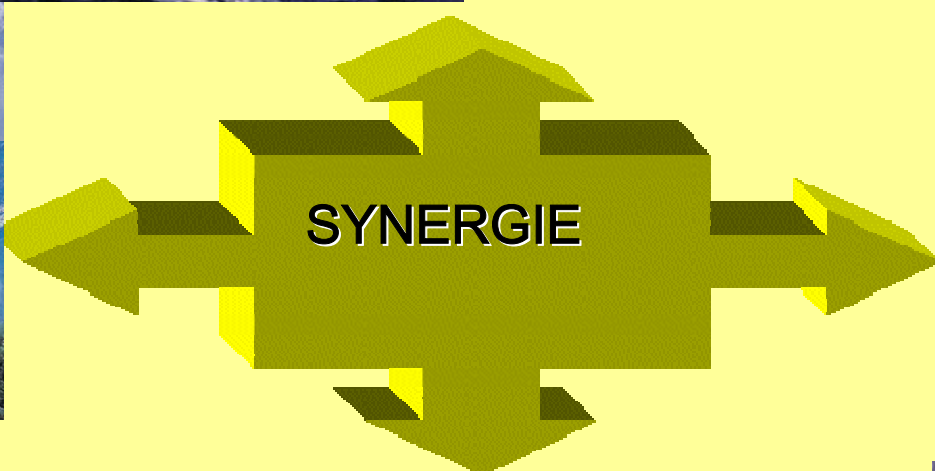
Definition of Decision Aid Products for military support

Many kinds of products are now available through different tools; let us see some of these products and tools :

- The TADS on Synergie
- Web sites for Land forces and Air forces
- Storm : a special application for the Navy

Synergie,
one of main tools of the forecaster in Meteo-France

Made available to the armies



Wednesday, 11 September 05
Brigitte Bénech, M-Françoise Vo



Photo © Marine nationale

SYNERGIE

- **SY**steme
- Numérisé
- d'**E**xploitation
- **R**ationnelle et
- de **G**estion
- **I**nteractive
- et **E**volutive
- des informations météorologiques par les prévisionnistes

The French Approach to generic TDA



BMSS
Bourges-April 2005
DGA Armée de Terre-
Wednesday, 16 November 05
Brigitte Bénech, M-Françoise Voidrot

Tenth workshop on Meteorological Operational
Systems



Synergie for military support

Synergie, which is one of the main tools of forecasters in Meteo-France, has been made available to the armies.



▶ TDAs production within a meteorological forecasting system: Synergie

- Meteo-France develops and maintains a mature forecasting system already « all geographical region », « all climate » « all data in WMO formats» capable
- The militar forecasters are trained on this system since 1993
- The system is able to be used on past data for retex purpose,

The TDA factory is integrated within Synergie



- TDAs can be defined on any observed or NWP model data received in standard WMO format :

- Whichever the upstream telecommunication mean (Retim, dedicated link, clé USB...),
- Which ever the origin of the data ingested into the Synergie data base (Météo-France, ECMWF, UKMet, DWD, US...),
- Whichever the geographical domain,

Restrictions (for the moment) :

- criterias have to be defined on consistent data in term of grid resolution

Still not on other data (satellite, radar...)

Input data

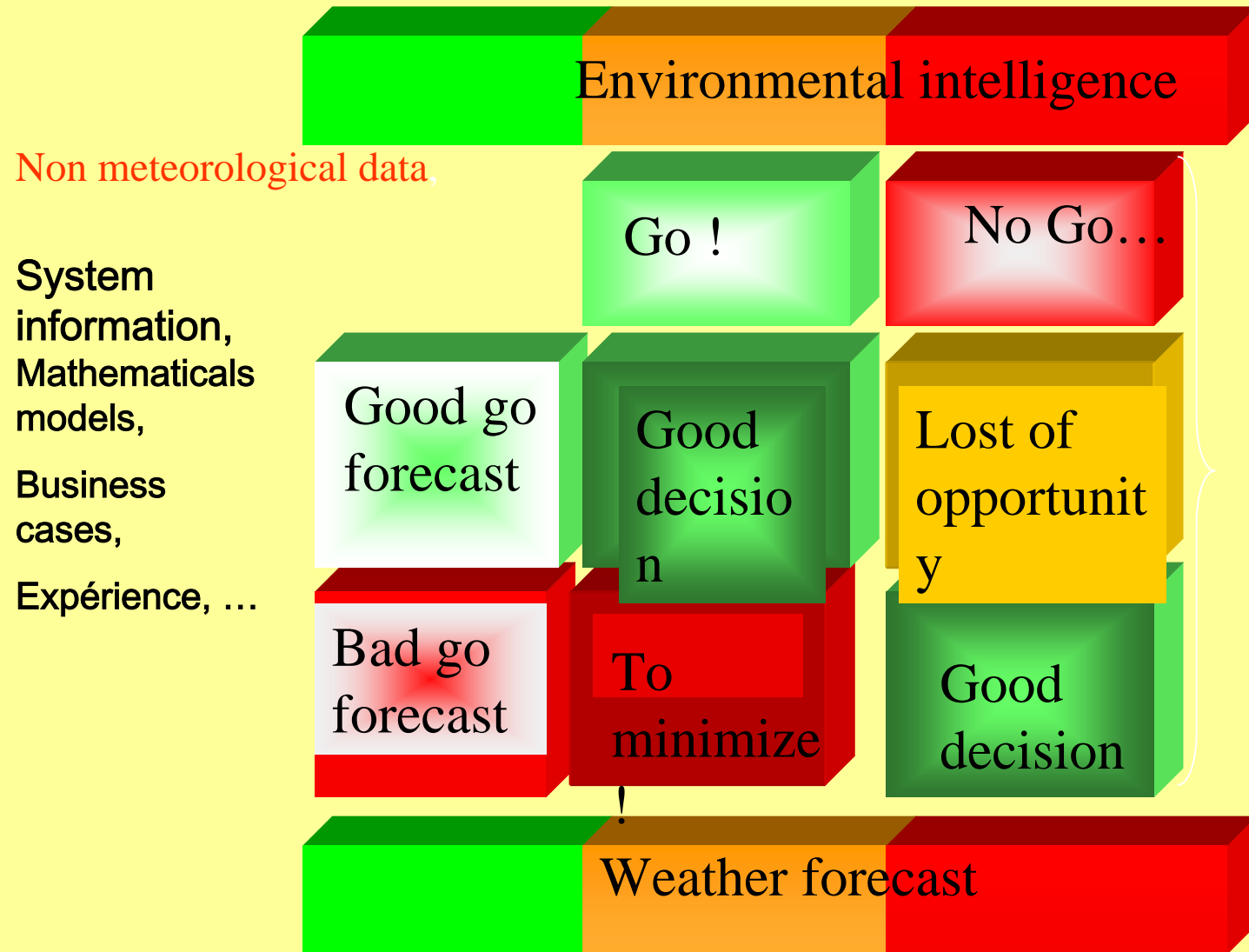
- Any NWP model data into WMO GRIB format
- Observation in WMO Formats : SYNOP, SYNOR, SHIP, BUOY, QUICKSCAT,



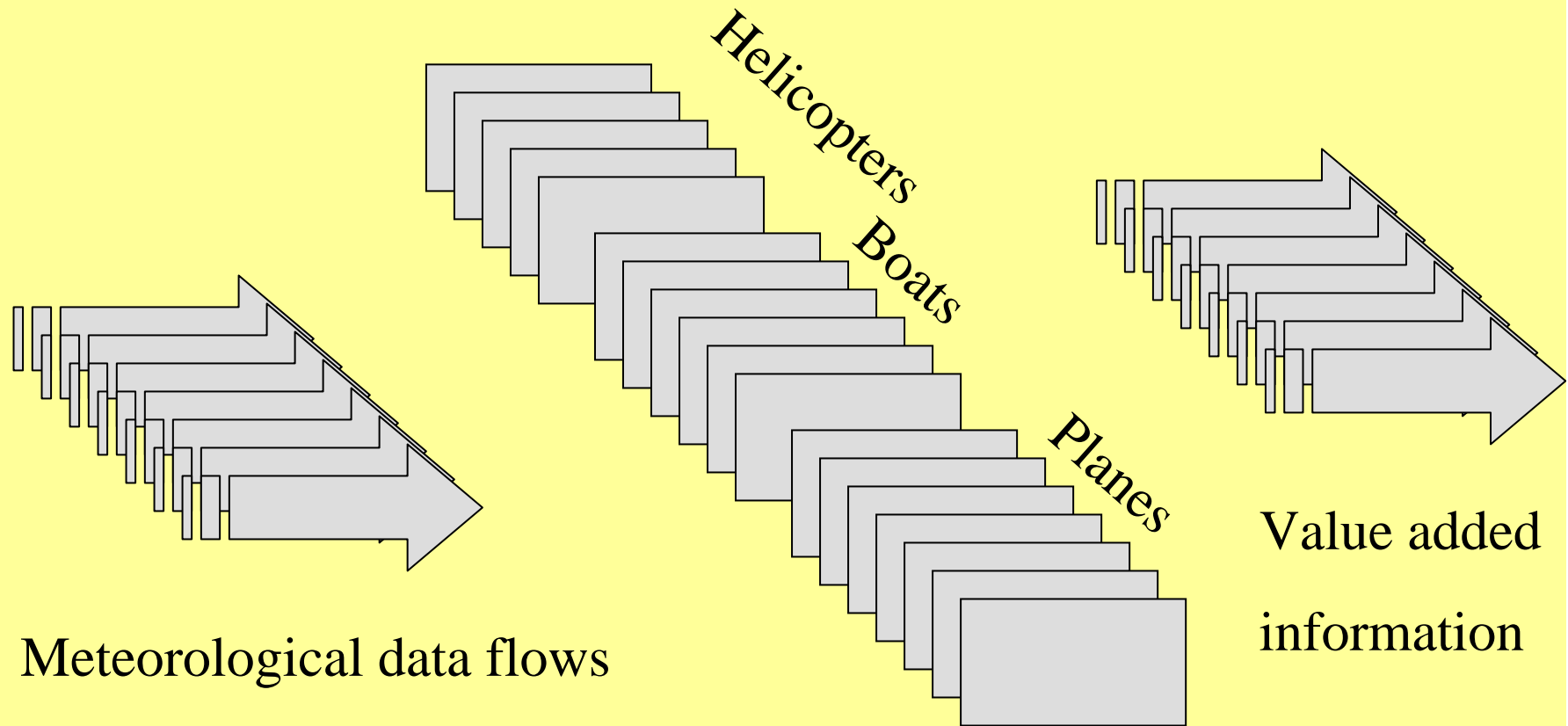
Observations

- Same behavior than with Numerical model
...BUT
- « Holes » can appear when the observations network is not dense enough

Forecast versus Decision Aid



▶ A rules library=Elementary generic TDAs



Meteorological data flows

One system = one set of rules



Rules design

ELEMENT

Helicopter

Label to display as an information

DATA MINOR/MAJOR PROD_MODELE Model_name parameter

vertical_unit

vertical_level calculated/raw

C1 First level of thresholds : amber area

C2 Second level of thresholds : red area

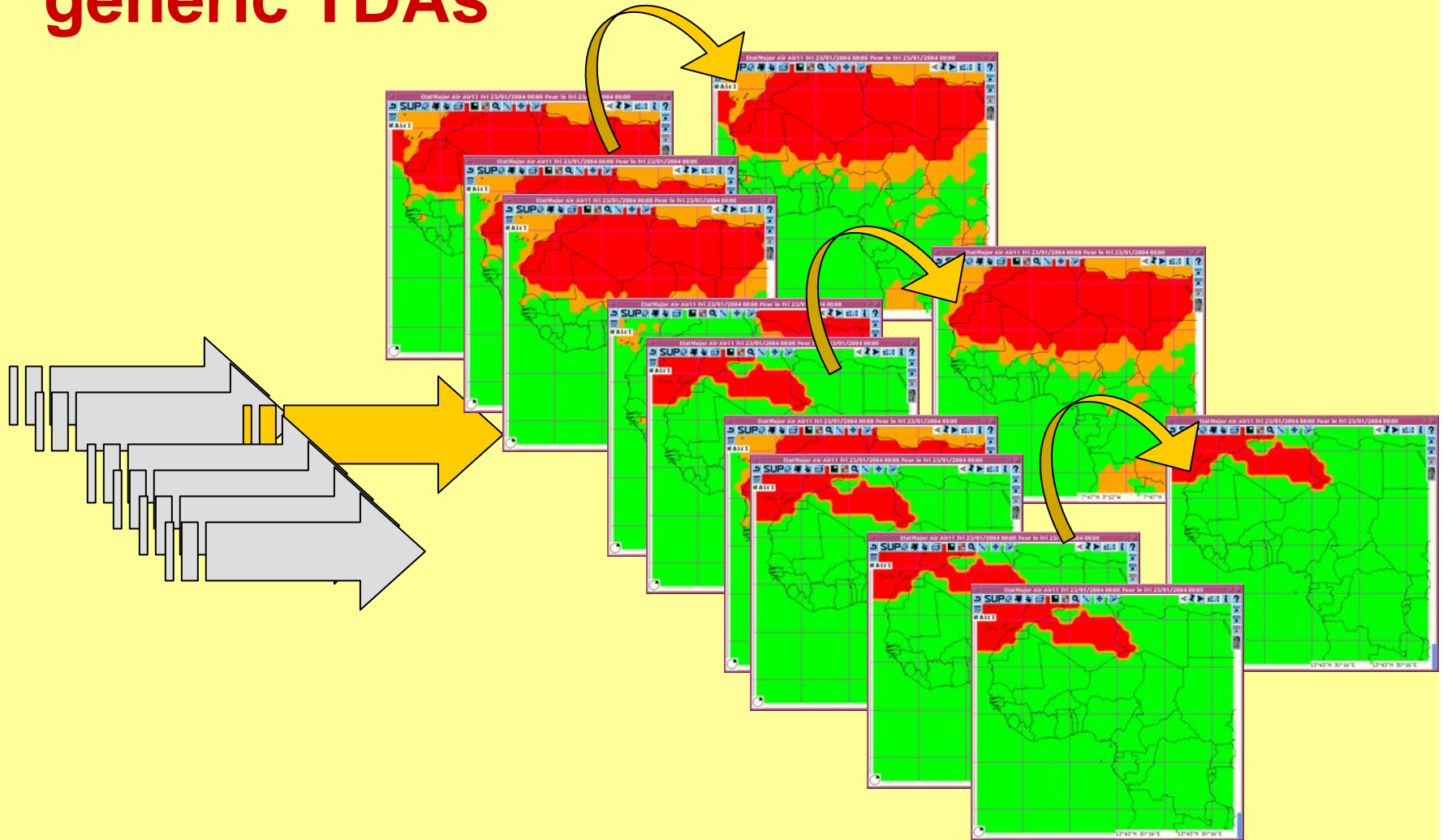
DATA MINOR PROD_MODELE ECMWF1.5 FF H

10M calculated

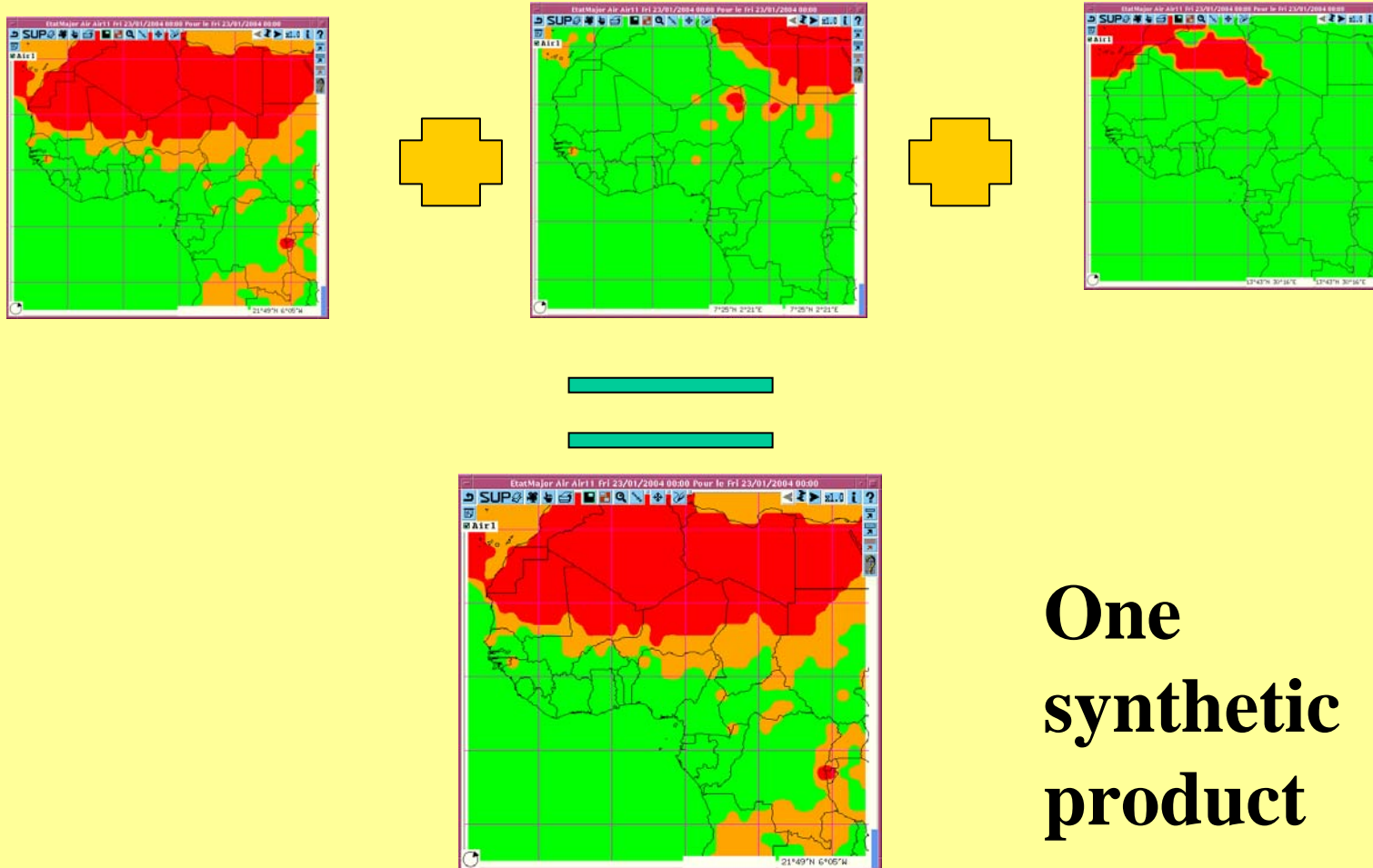
C1 FF>20 AND FF<=25

C2 FF>30

🔺 **One mission : Σ Rules =synthetic generic TDAs**



Selection of one helicopter, one boat, one plane = one mission



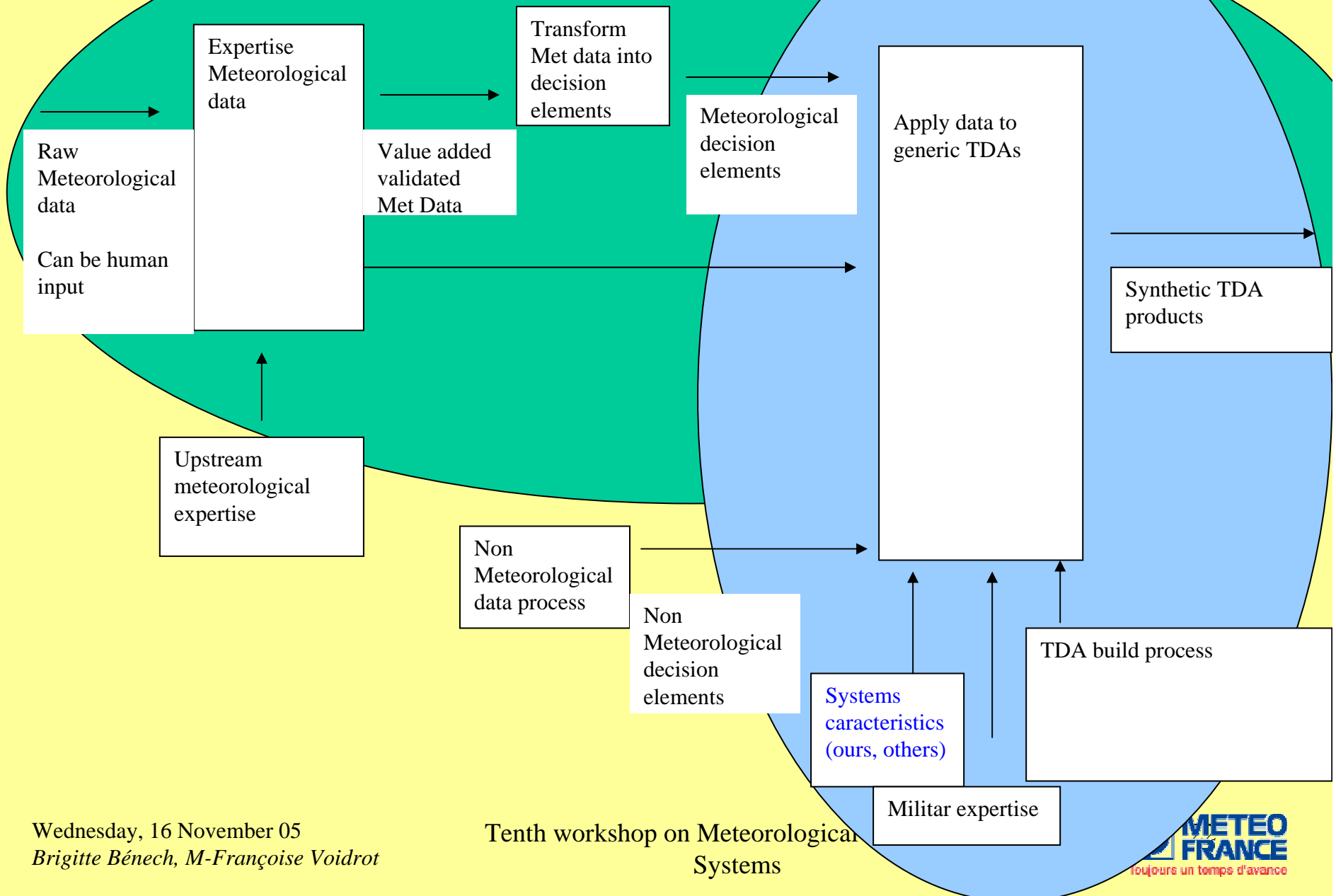
One
synthetic
product

🔺 Compound TDA access organisation

- Combination leads to large amount of TDAs
- A user-defined tree organisation allows efficient access



TDA Scope



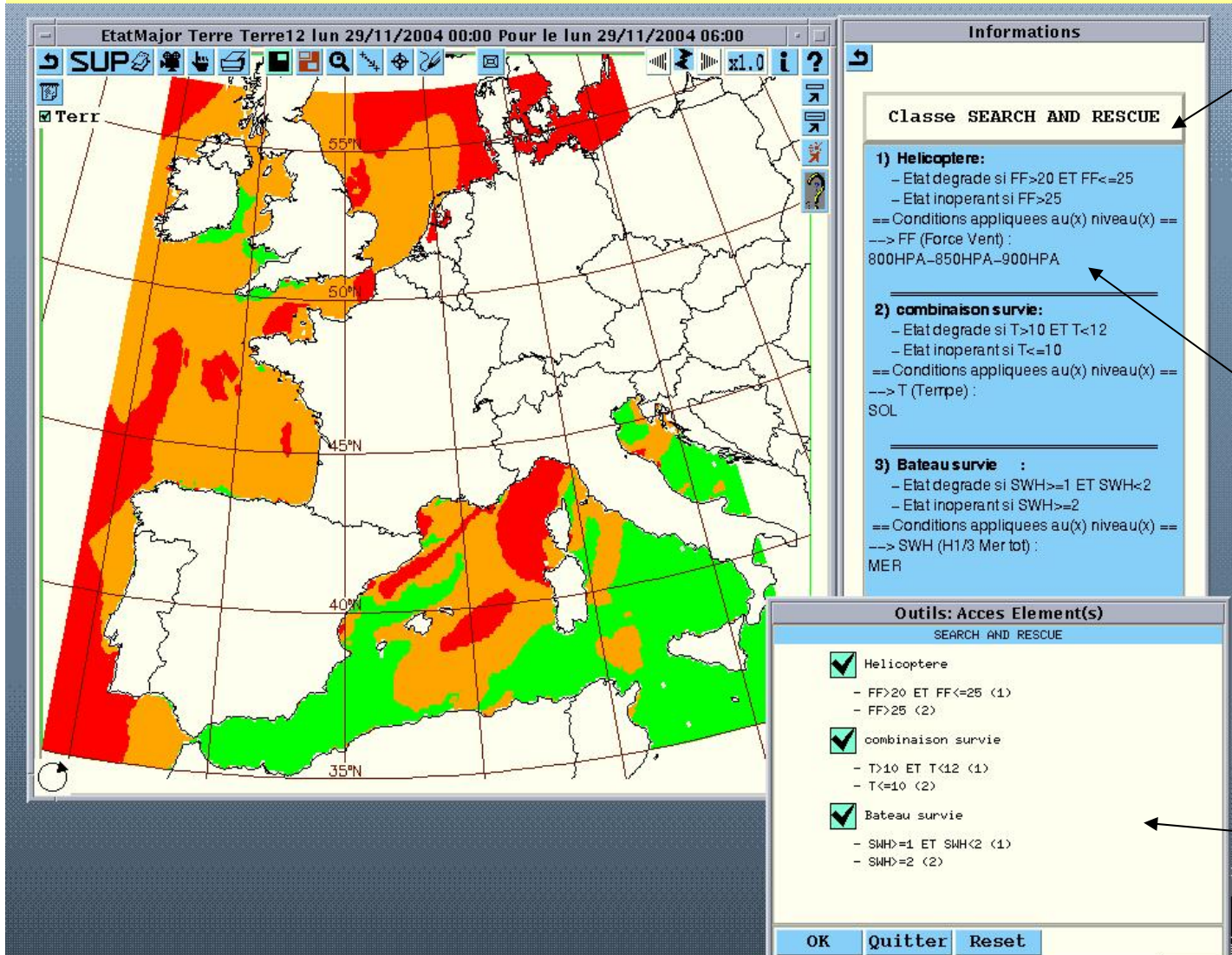
A TDA Product

One data set is applied to a generic compound TDA

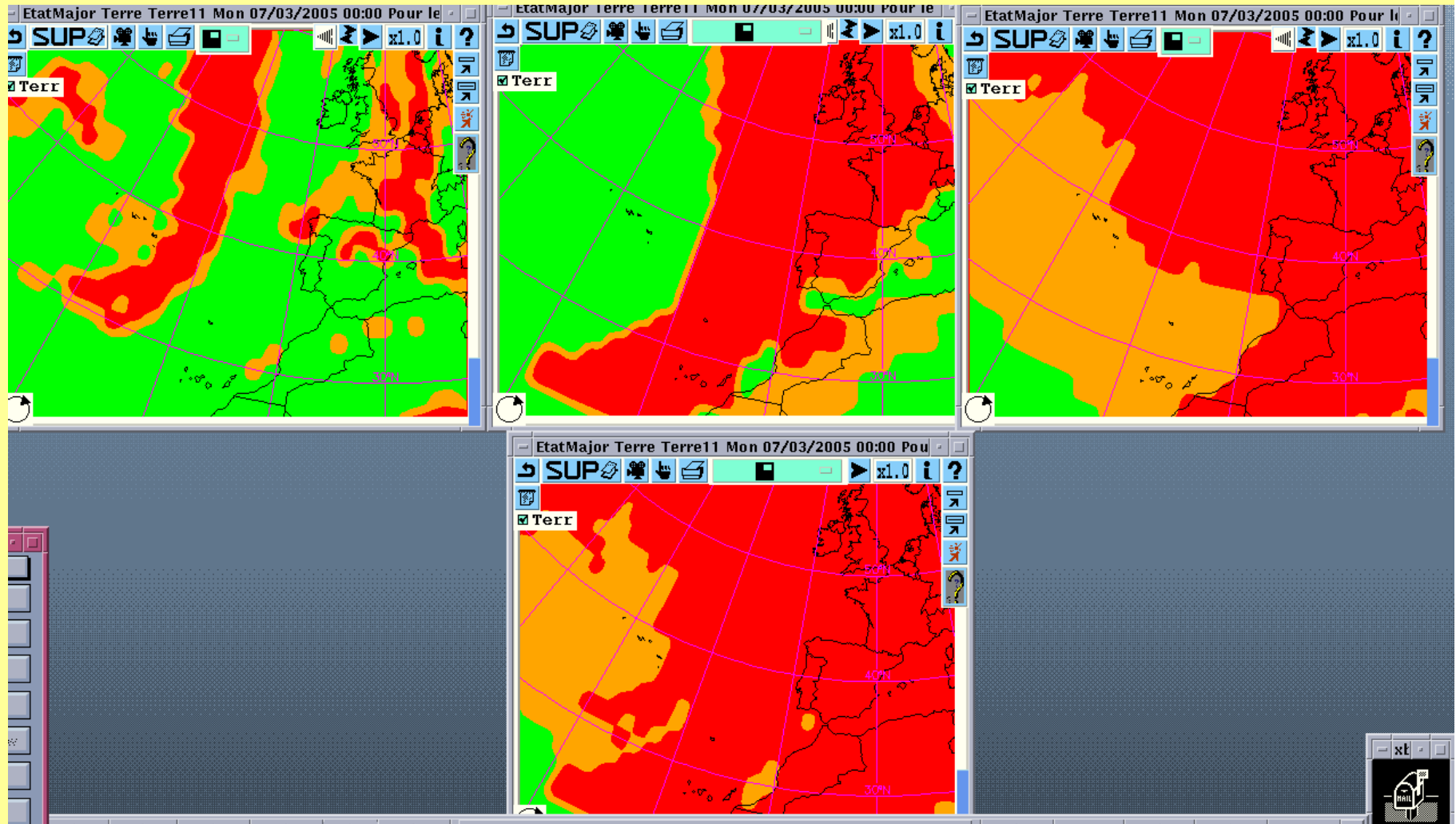
Information =
description of
the synthetic
generic TDA

3D integration is
possible

Select or unselect
elementary TDAs
composing the
generic synthetic
TDAs



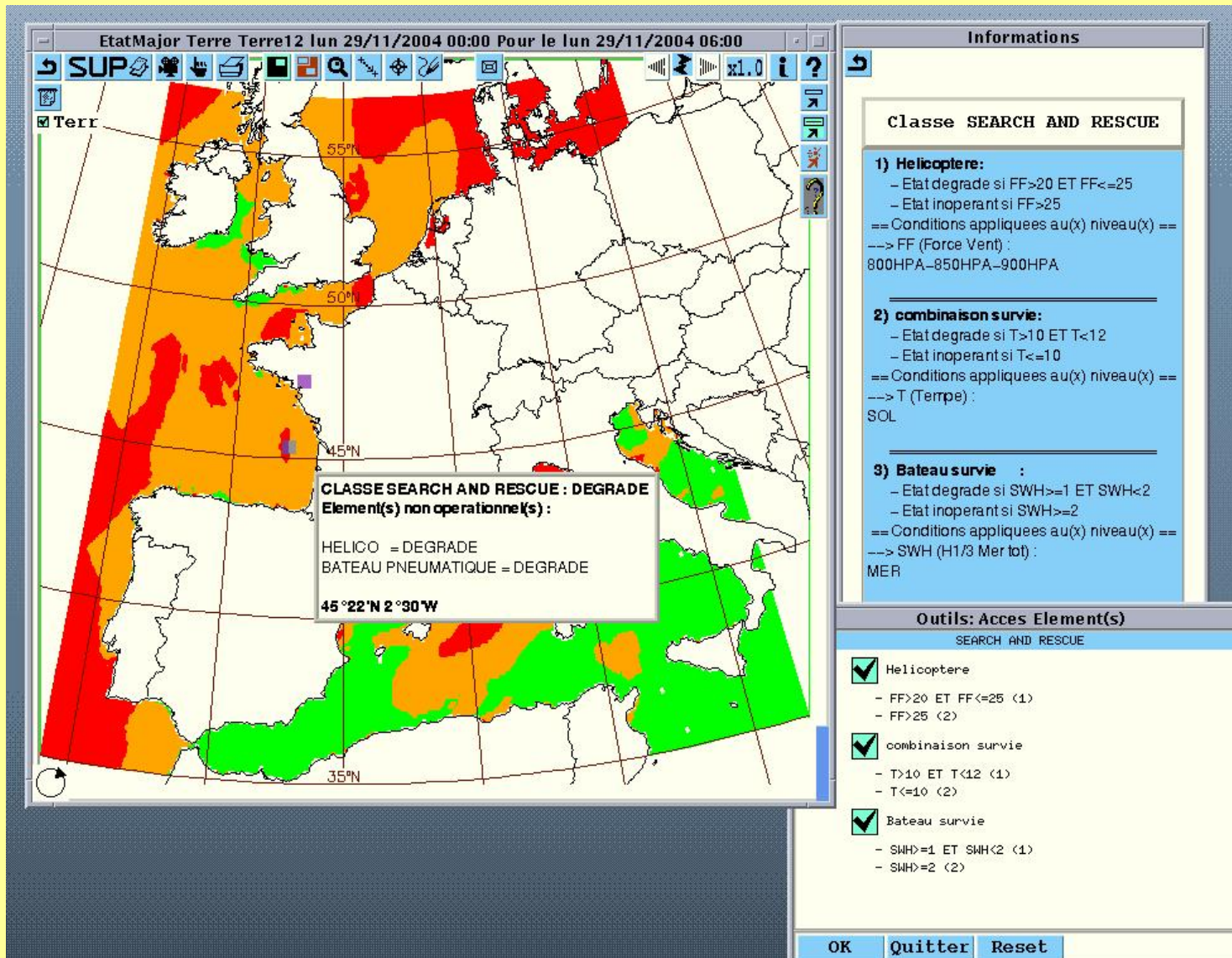
1 element unfavorable=unfavorable synthesis



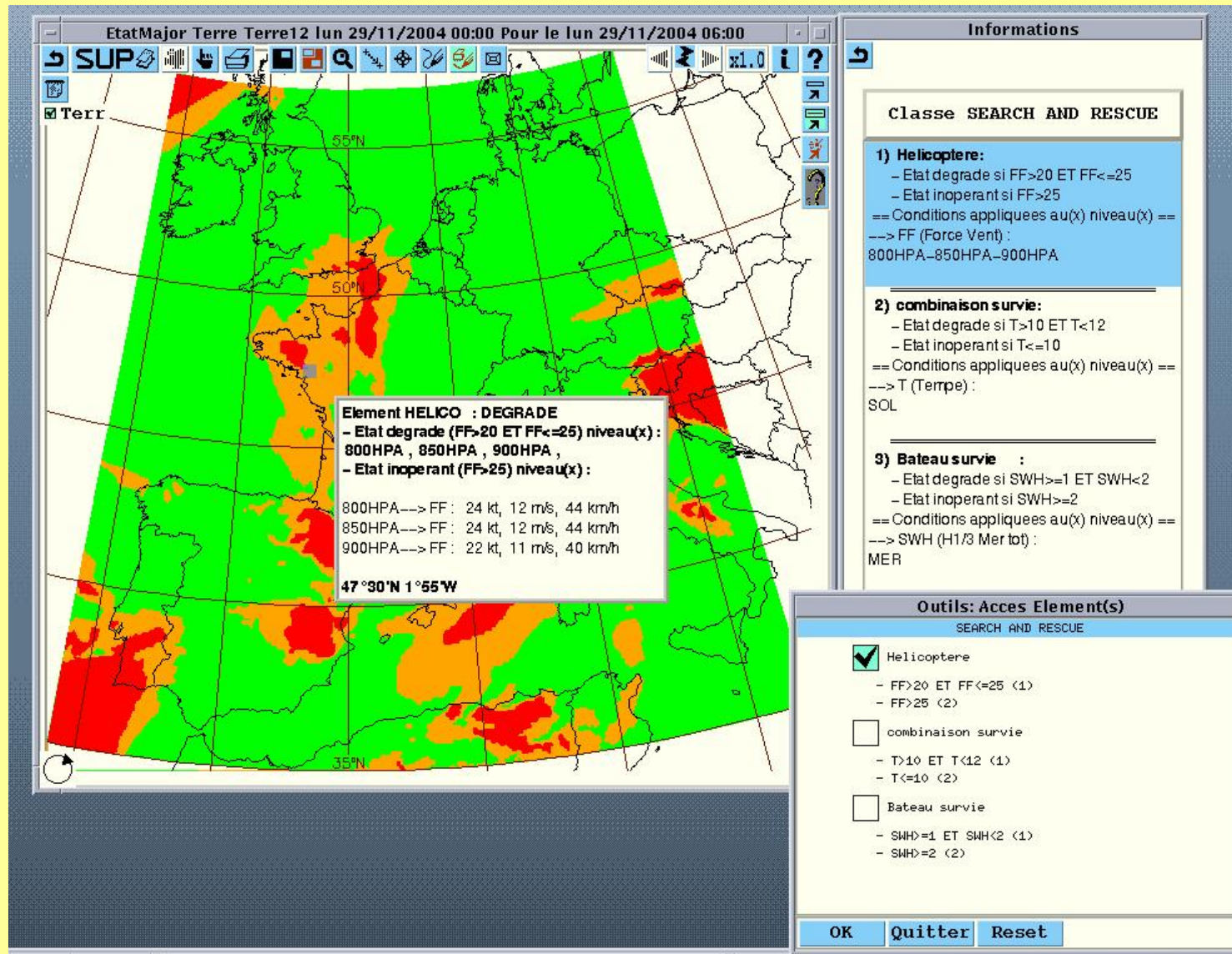
Wednesday, 16 November 05
Brigitte Bénech, M-Françoise Voidrot

Tenth workshop on Meteorological Operational
Systems

Multi-elements information gauge



Multi-levels mono elements gauge



Wednesday, 16 November 05
 Brigitte Bénech, M-Françoise Voidrot

Tenth workshop on Meteorological Operational
 Systems

Edit TDA output

EtatMajor Terre Terre12 lun 29/11/2004 00:00 Pour l

SUP

Terr

Champ Exper

35°N

50°N

45°N

40°N

35°N

Outils : Modification interactive

Zone
Etat inoperant

Visualisation grille

retracer reinitialiser

Informations

Classe SEARCH AND RESCUE

Helicoptere:
- Etat degrade si $FF > 20$ ET $FF \leq 25$
- Etat inoperant si $FF > 25$
- Conditions appliquees au(x) niveau(x) ==
> FF (Force Vent) :
0HPA-850HPA-900HPA

combinaison survie:
- Etat degrade si $T > 10$ ET $T < 12$
- Etat inoperant si $T \leq 10$
== Conditions appliquees au(x) niveau(x) ==
--> T (Tempe) :
SOL

3) Bateau survie :
- Etat degrade si $SWH \geq 1$ ET $SWH < 2$
- Etat inoperant si $SWH \geq 2$
== Conditions appliquees au(x) niveau(x) ==
--> SWH (H1/3 Mer tot) :
MER

Outils: Acces Element(s)

SEARCH AND RESCUE

Helicoptere
- $FF > 20$ ET $FF \leq 25$ (1)
- $FF > 25$ (2)

combinaison survie
- $T > 10$ ET $T < 12$ (1)
- $T \leq 10$ (2)

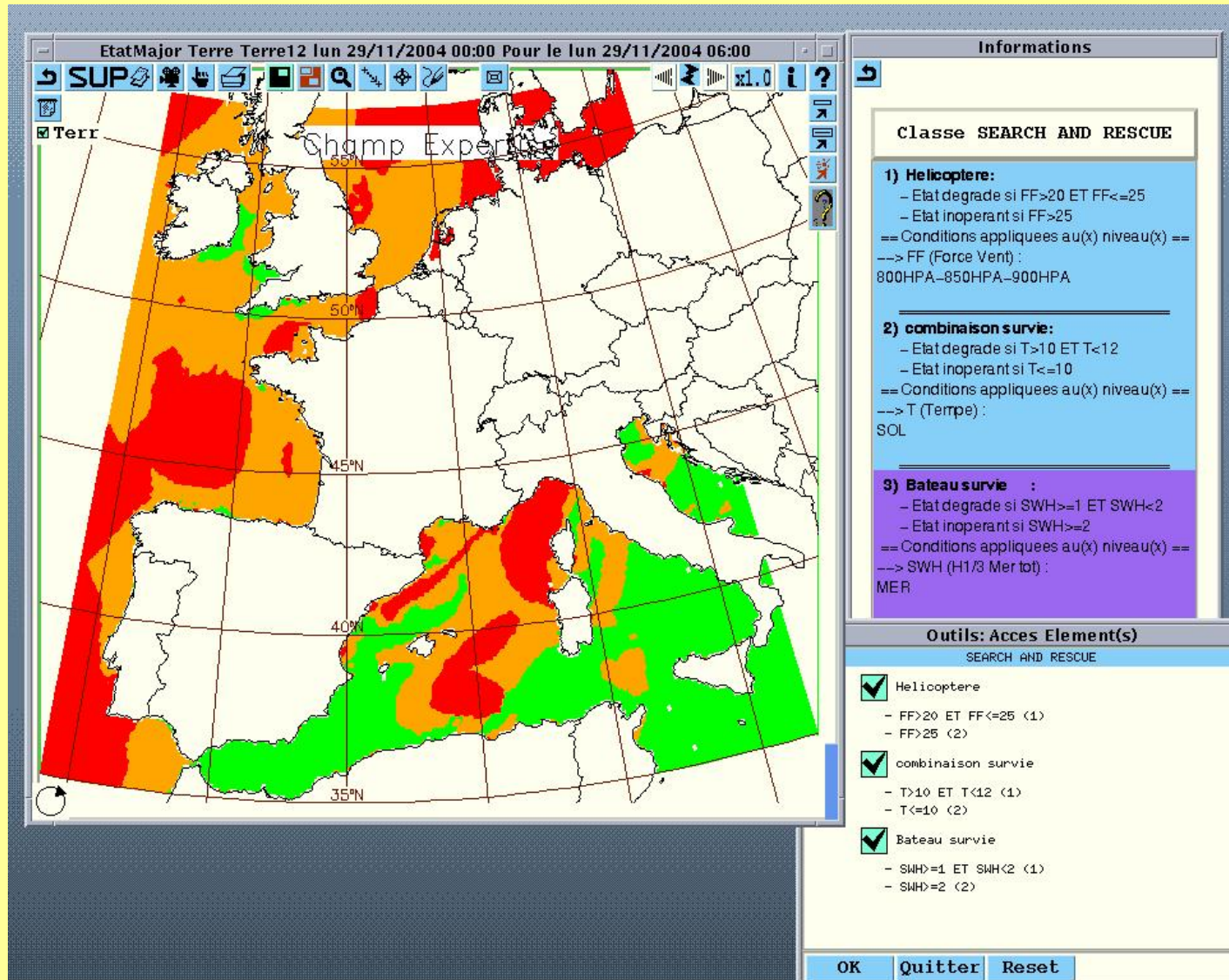
Bateau survie
- $SWH \geq 1$ ET $SWH < 2$ (1)
- $SWH \geq 2$ (2)

OK Quitter Reset

Wednesday, 16 November 05
Brigitte Bénech, M-Françoise Voidrot

Tenth workshop on Meteorological Operational
Systems

The expertise is taken into account into the synthesis without modifying the fields

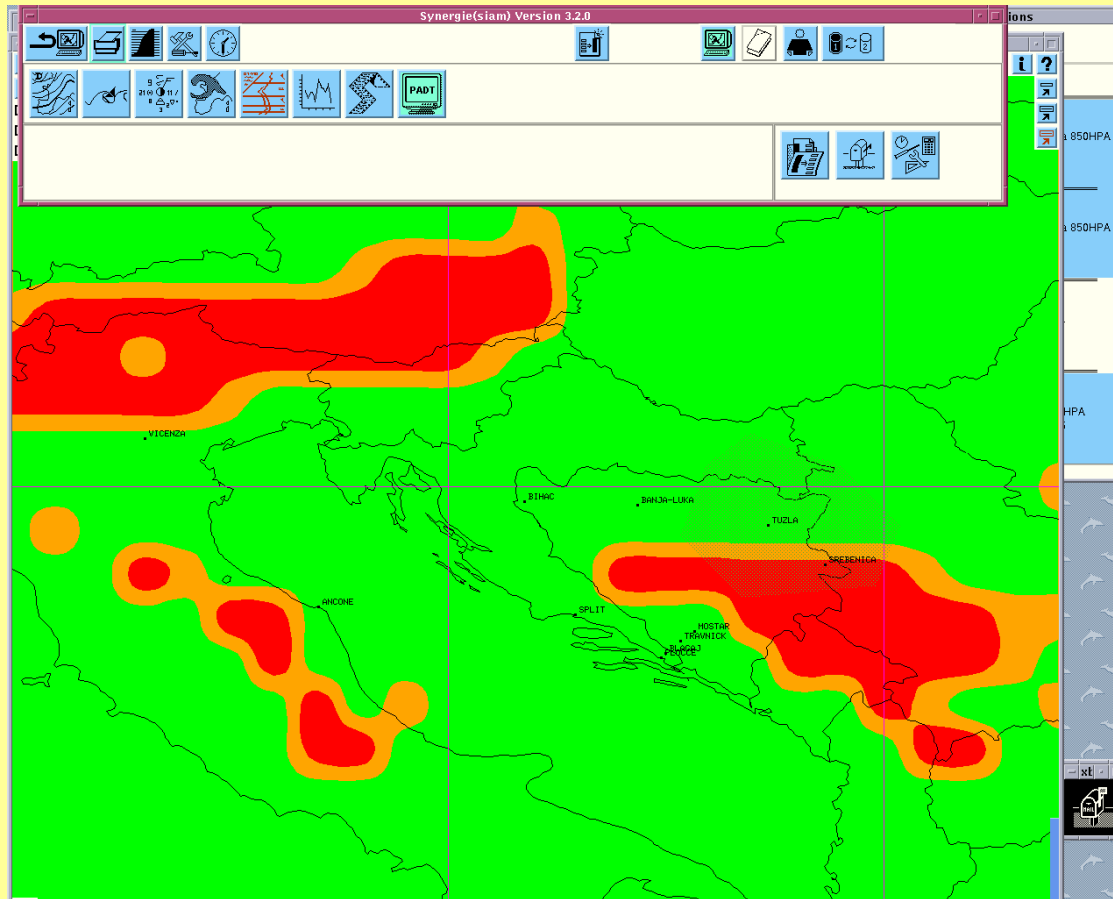


Wednesday, 10 November 05

Brigitte Bénech, M-Françoise Voidrot

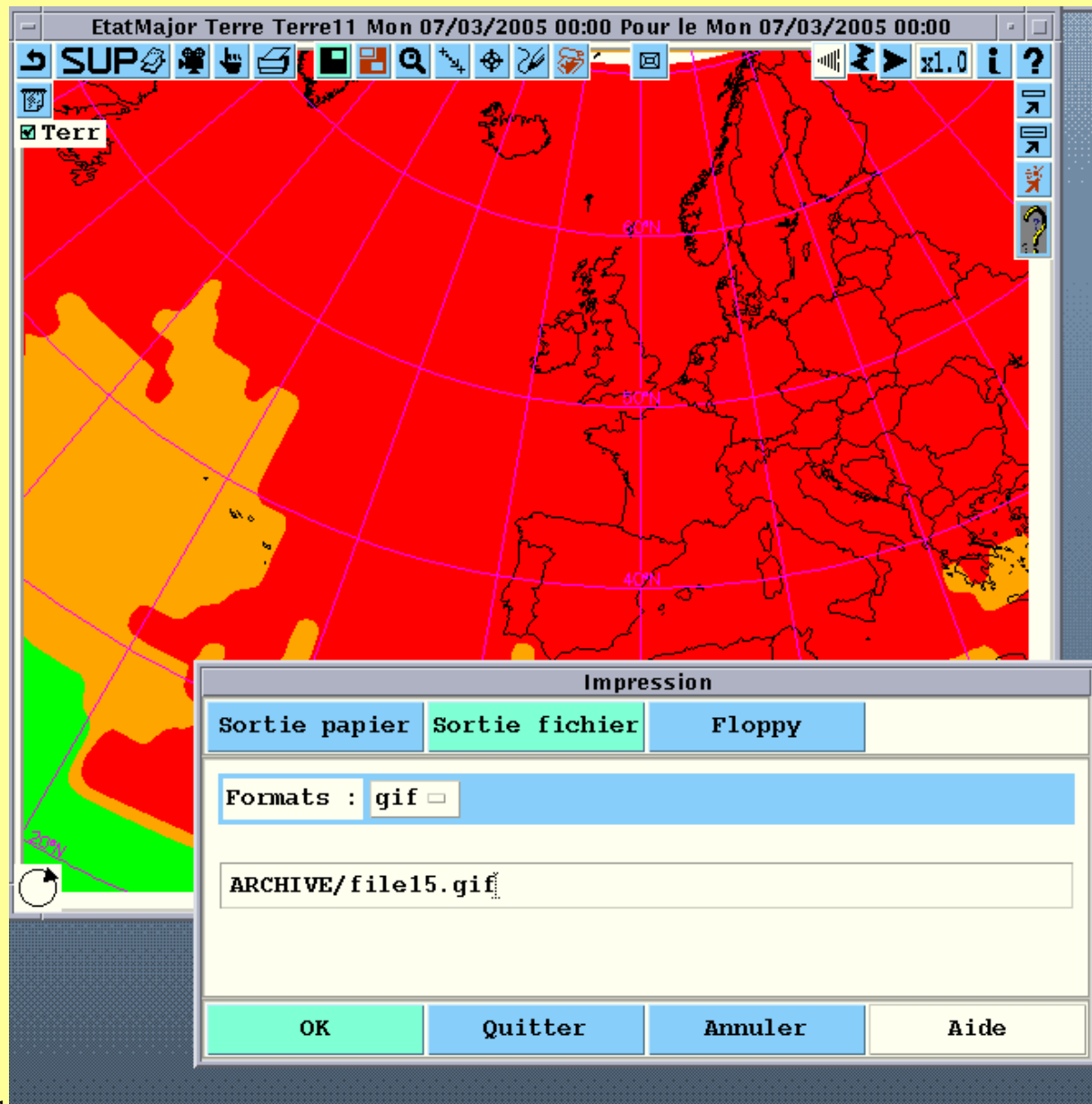
10th workshop on Meteorological Operational
Systems

The TDA factory is integrated within Synergie



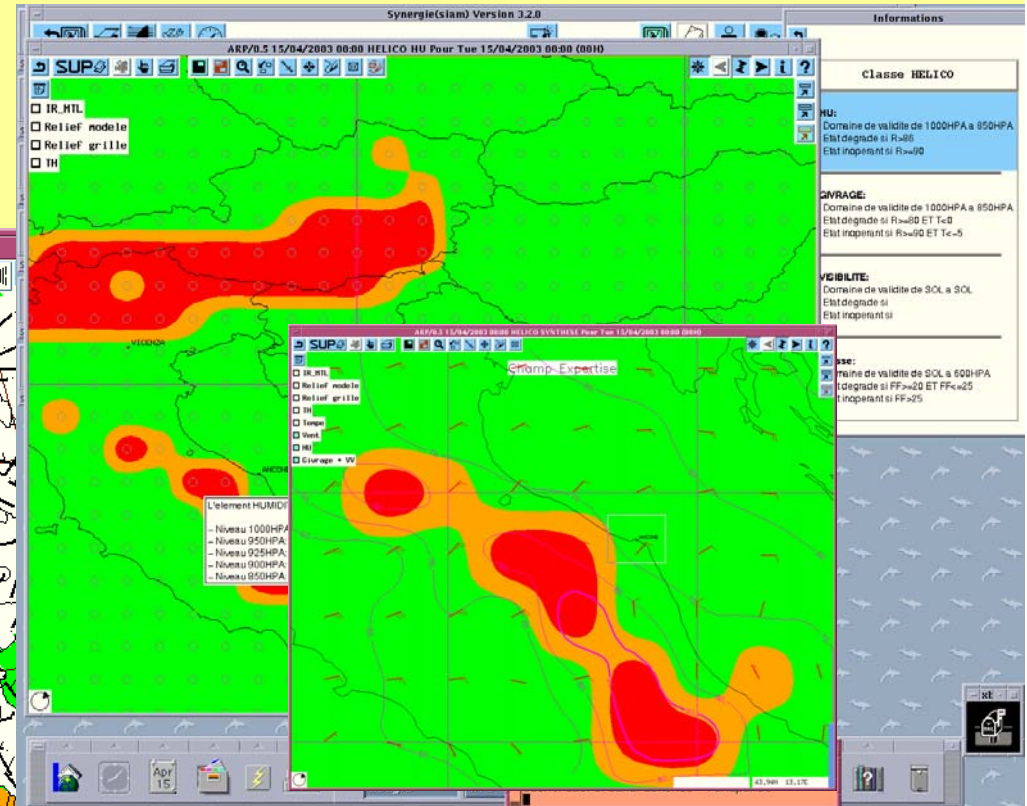
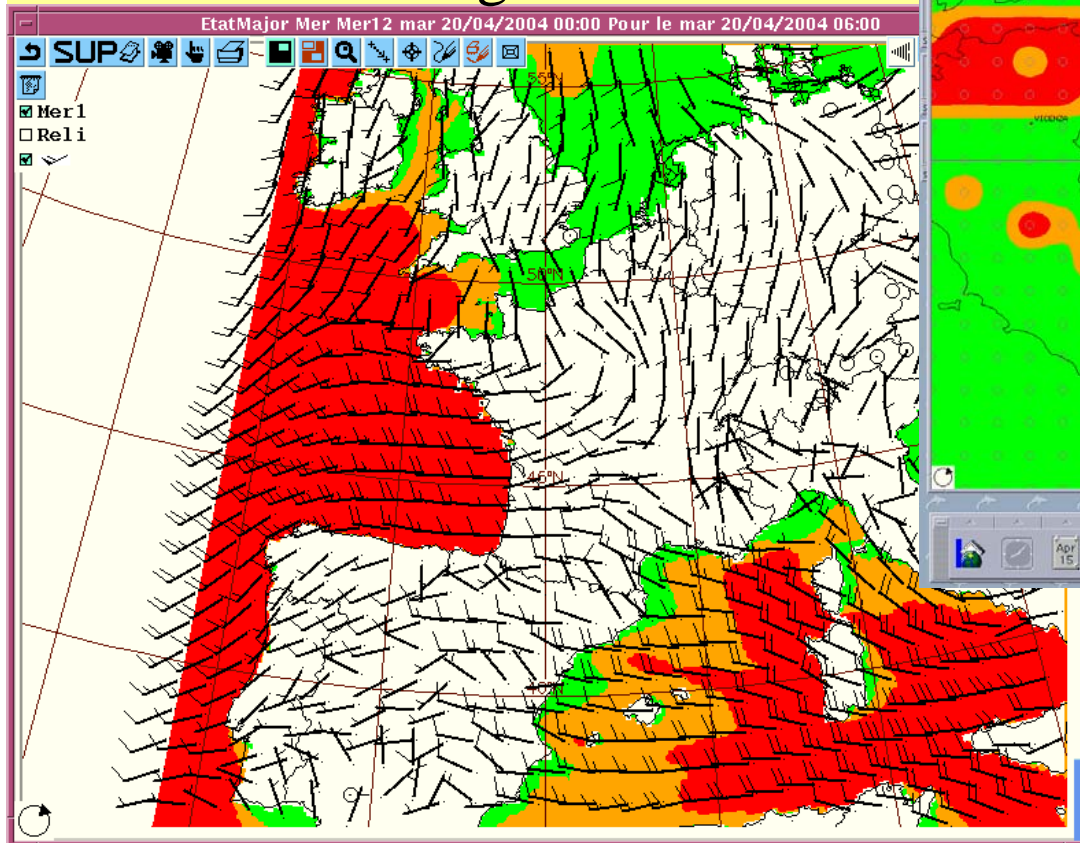
- Standart access in the Graphical User Interface
- Consistent GUI
- benefit from « basic services of the Synergie software » (zoom, overlay with all meteorological data, animations, user defined shortcuts...)

Output : georeferenced GIF, TIFF, JPEG



Use of the basic Synergie functions

Overlay with meteorological data



Zoom over a theater, keeping a synoptic view

Wednesday, 16 November 05
Brigitte Bénech, M-Françoise Voidrot

Tenth workshop on Meteorological Operational Systems

Shortcuts

Dossiers

Aprioritaire BATCH default

Liste des Macros

Nom de macro	Date	Heure	Statut
ddd	03/03/2005	16:16	1686_FULLL
essai4	12/11/2003	17:00	FULLL
essaiFL	09/12/2004	15:00	1686_FULLL
mer	05/03/2004	15:00	1686_FULLL
padt	08/11/2004	10:00	1686_FULLL
padt2	08/11/2004	10:00	1686_FULLL
precip	04/03/2005	15:00	1686_FULLL
rr	04/03/2005	14:00	1686_FULLL
rr24	04/03/2005	15:00	1686_FULLL
rr3	04/03/2005	15:00	1686_FULLL
rr31	04/03/2005	15:00	1686_FULLL

Macro selectionnee

ddd

Description

1/1 Padt
EtatMajor Interarmees SAR_PREV
domaine Euroc_Elargi
config Fond
SCROLLING ???
option Animation 0H 18H pas 6H

Reseau

07/03/2005 00:00

Validite

07/03/2005 00:00 0H00

Limites Mtgr

Debut

Fin

OK Quitter Annuler Aide

Wednesday, 16 November 05
Brigitte Bénech, M-Françoise Voidrot

Tenth workshop on Meteorological Operational
Systems

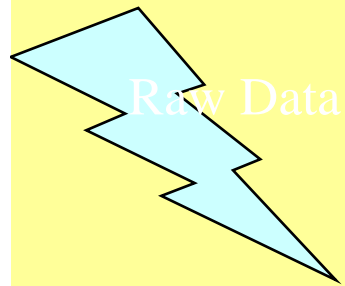
TDA's production within a meteorological forecasting system

- Right now the development aims rather at fulfilling tactical aid (real time data flow)
- It could be enrich with the possibility to work on climatological reanalysis data in order to answer all time range decisions

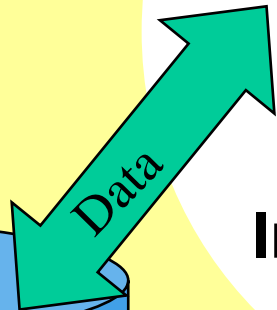
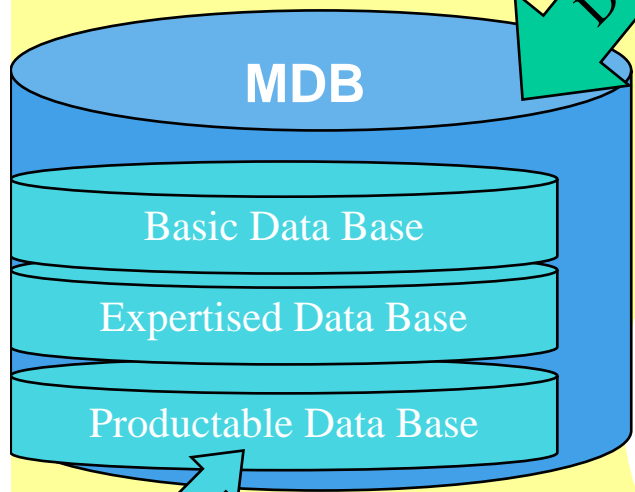
Interfaces

- To other nations data if in WMO formats : Done
- To non WMO formats : To be done for NATO formats
- To standard civil telecommunications means : Done
- To other nations elementary TDAs : to be input into the rules base or import interface to be defined
- To other nations or non meteorological TDA factory : Format to be defined (necessity of metadata fully describing the product to be considered)

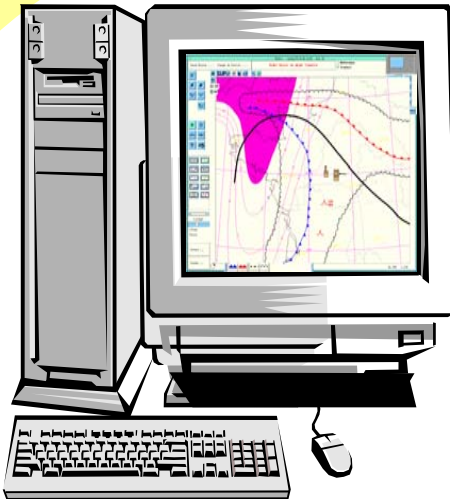
Web production process



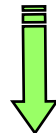
Raw Data



Data



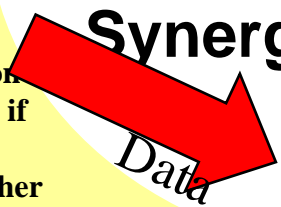
Interactive Synergie



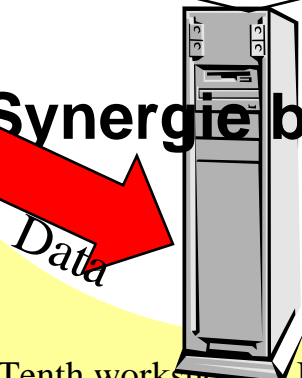
Images prototyping
Images generation planification



Images visualisation system



Synergie batch



Images



WEB server

Other systems (today pollution models, later military models if output in WMO formats or Synergie updated to ingest other formats)



16 November 05

Brigitte Bénech, M-Françoise Voidrot

Tenth workshop on Meteorological Operational Systems



Products worked out from Synergie

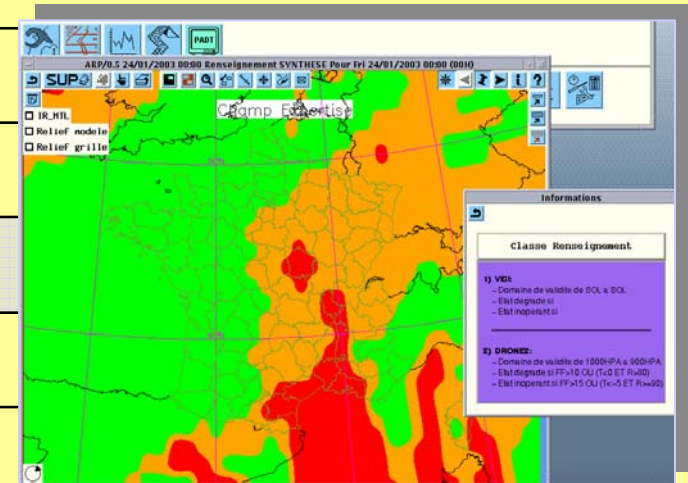
- Taverny, (*« Département DP » délocalisé*)
- Celenv,
- **Cemeter** (*Météo-France Sous traitant dans le cadre d'un marché DGA/Alcatel*)
- **Charles de Gaulle (Héraklès 2003, Agapanthe 2004)** (*Convention de MCO spécifique*)
- Expérimentation Otan Cometfire
- **Anniversaire du débarquement**
- CEL

Actions en cours ou en projet

- **Evaluation Armée de l'air (Bases et Théâtres)**
- **PEA Prométhée LT**, *(Co-maîtrise d'ouvrage DGA Météo-France)*
- **PEA Climat** *(Météo-France Sous traitant dans le cadre d'un marché DGA/Tekelec)*
- **Synergie-Océano en lien avec Guide Metoc et Calypso**
- **Participation au séminaire REP de la DGA**
- **PREDEM**

Cemeter

Moyen	Mise en Œuvre (en 2 ans)
Données de bases	Retim 2000 puis Liaison spécialisée pour des données mondiales
Données spécifiques	Capacité à supporter des théâtres
Outils	Synergie, requêtes IAA
Expertise	
Consultance/Études	Développements spécifiques PADT
<i>Personnels</i>	<i>1 personne mise à disposition</i>
Formation	Formations synergie, prévisionniste et administrateur
Support opérationnel	MCO dans le cadre du marché



Porte Avions Charles de Gaulle

Means	Mise en Œuvre (en 3 mois)
Basic data	Catalogue spécifique issue de Celenv via SICMAR METOC et Syracuse
Specific data	Aladins atmosphériques transporté, vagues, mosaïques d'images, Produits de moyenne echeance EPS
Tools	Synergie, requêtes IAA, mini site
Skill	Chef prévi (mission Agapanthe)
Consulting/research	Gestion de projet, conception configuration Synergie adaptée
<i>people</i>	<i>Working in Météo-France or in the Military Environment Cell in Toulouse</i>
Training	Synergie for forecasters and administrators of the system
Operational support	Convention de MCO



Websites for military support

- If necessary Meteo-France is now able to build rapidly dedicated web sites for the armies.
- Specifications are given by the special meteorological units depending on one of the three forces
- Those specifications are expertised and eventually completed by specialists in Meteo-France (on models, forecasts, transmission...)
- Some special products can be issued from the operational units of Meteo-France (charts, Temsi, bulletins...)
- A special small unit is responsible for the construction and maintenance of the web site

Météo France Portes Avions Nucléaire - Mozilla Firefox

Echier Edition Affichage Aller à Marque-pages Outils ?

http://www.meteo.fr/special/minisites/ports/PAN4fd58sx9/

MÉTÉO FRANCE
Toujours un temps d'avance

Cliquez sur la carte !

Météo-France pour le PAN

LES ENVIRONNEMENTS DE GAULLE

- Web site for the aircraft carrier “Clemenceau”

Météo-France Produits:

- Carte Vigilance
- Bulletins :
 - Departement
 - Bulletins
- Fronts et Isobares
 - Dern. Analyse
 - Prévisions
 - TAF & METAR

Dernière Radar :

- Composite
- Locale :
 - Dernière
- Anim. Radar :
 - Composite
 - Locale :
 - Animation
 - Archive Radars 20 jours
 - Impacts de foudre

Dernière Sat :

- Visible FR
- IR FR
- C. Colorée
- C. Colorée 2
- Visible Europe
- IR Europe
- VAP Europe
- Anim. Sat :
 - Visible FR
 - IR FR
 - Visible Europe
 - IR Europe
 - VAP Europe

• Websites for military support

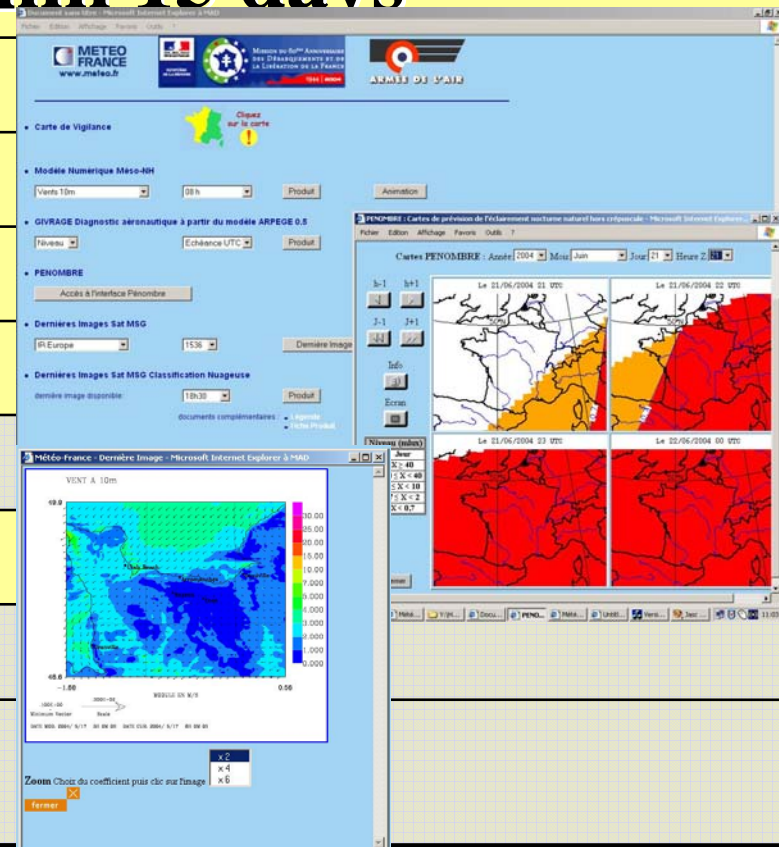




Websites for military support

60th birthday of military allied forces' landing (1944)

Means	Worked out within 15 days
Basic data	Specific Retim profile.
Specific data	Mésos NH
Tools	Synergie, web site
Skill	
Consultancy/studies	
People	Support of the departmental meteorological center Caen
Training	
Operational Support	





Websites for military support Mission of rescue to Pakistan (NATO action)

- See demonstration

Evaluation Armée de l'air

Moyen	Mise en Œuvre
Données de bases	Retim, Extractions IAA, PDUS
Données spécifiques	Aladins transportables,
Outils	Synergie
Expertise	Support (s) à l'évaluation
Consultance/Études	
Personnels	CDMA Toulouse, CMA Cazaux
Formation	Administrateur et installateur Synergie
Support opérationnel	

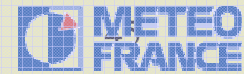
Prométhée LT

Moyen	Mise en Œuvre
Données de bases	Retim, Extractions IAA, PDUS, Acewex, Syracuse
Données spécifiques	Aladins transportables,
Outils	Synergie
Expertise	Flux d'informations Météo, Formats, Synergie ...
Consultance/Études	Aide à l'Evaluation des architectures proposées par les industriels, Intégration de Synergie en Amont aux systèmes Acewex, Inmarsat, Réceptions directes, Syracuse,formats Otan.... En Aval, DSV, Balistique, IWEDA...
Personnels	
Formation	
Support opérationnel	

Wednesday, 16 November 05

Brigitte Bénéch, M-Françoise Voidrot

Tenth workshop on Meteorological Operational
Systems



1000 ans d'un temps d'avance



STORM, specific tool for the Navy

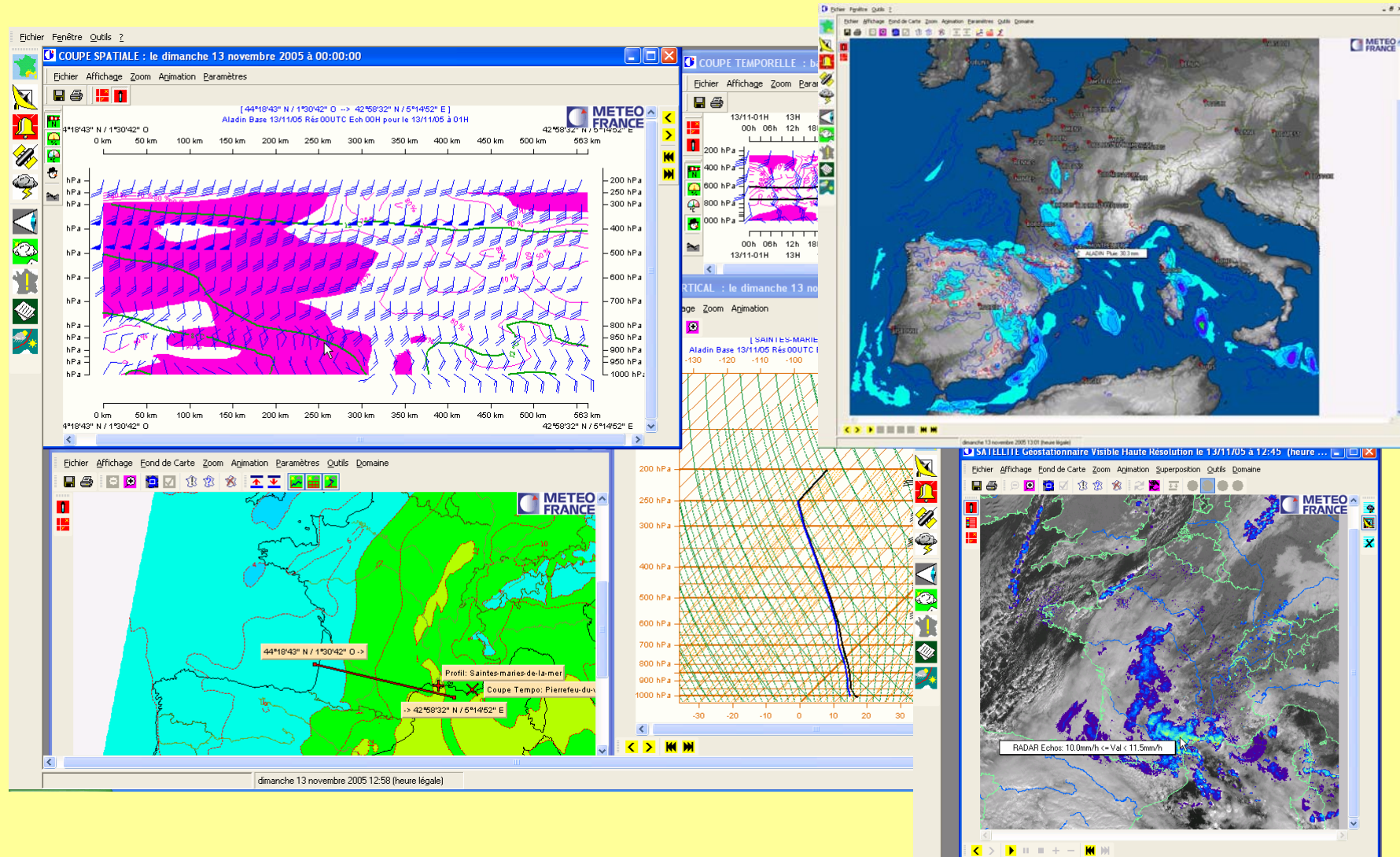
- Synergie is not the only visualisation system existing in Meteo-France.
- For local area forecasters, MF has developed a specific tool on windows PC, with a classic windows operating system (named PIC).
- It has been developed to transfer expertise from central forecast office and regional centres to local forecasters, and to supply local forecasters with the minimum data set allowing to follow up the meteorological situation



STORM, specific tool for the Navy

- Data and products are pre-processed with specific superimpositions: as composite charts of fields from NWP models...
- This tool is fitted for local area forecast with specific geographic information
- Data are transmitted via Retim
- Some of these systems have been settled in met services on naval bases

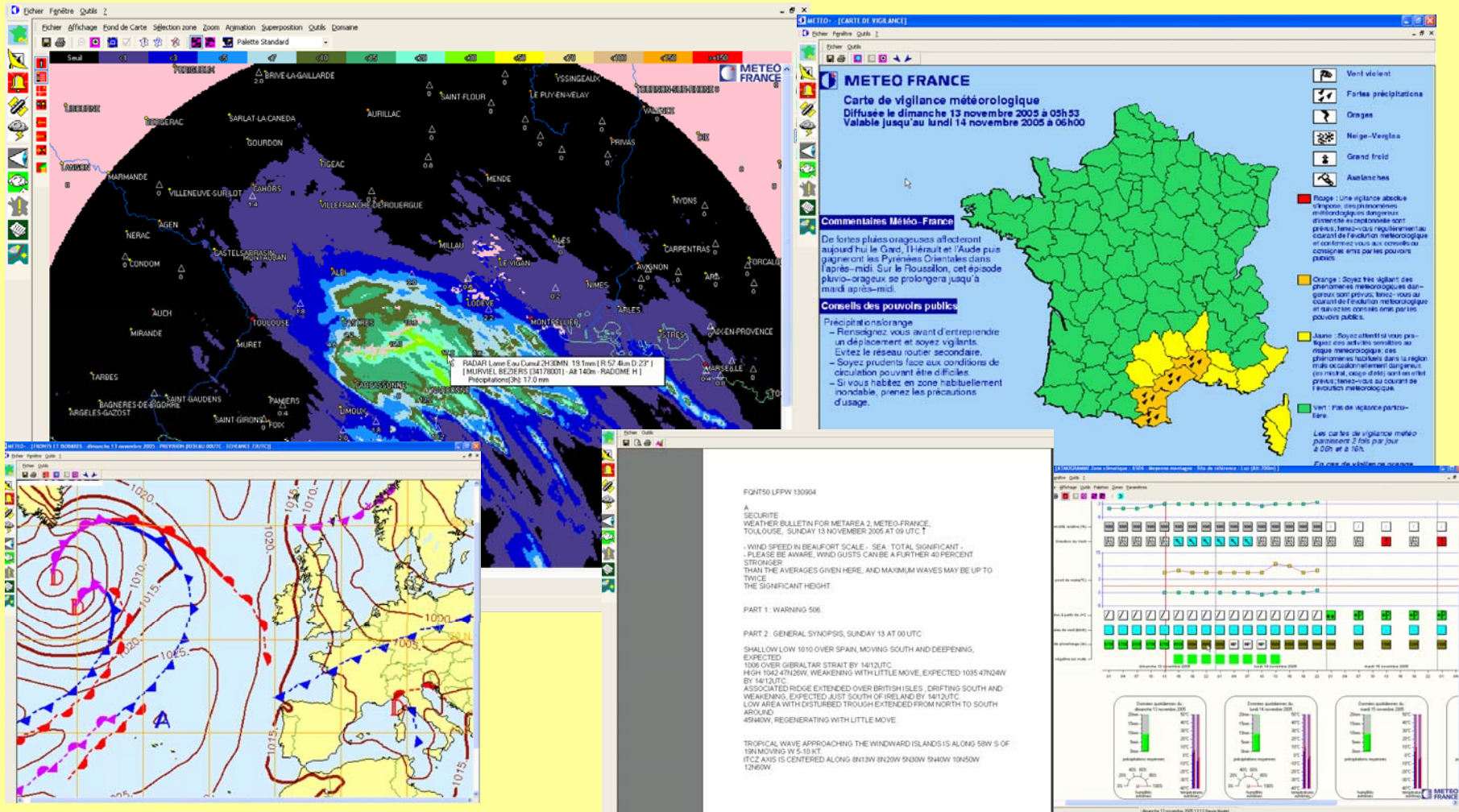
PIC, the visualisation system for local forecasters in Meteo-France



Wednesday, 16 November 05
Brigitte Bénech, M-Françoise Voidrot

Tenth workshop on Meteorological Operational
Systems

PIC, the visualisation system for local forecasters in Meteo-France



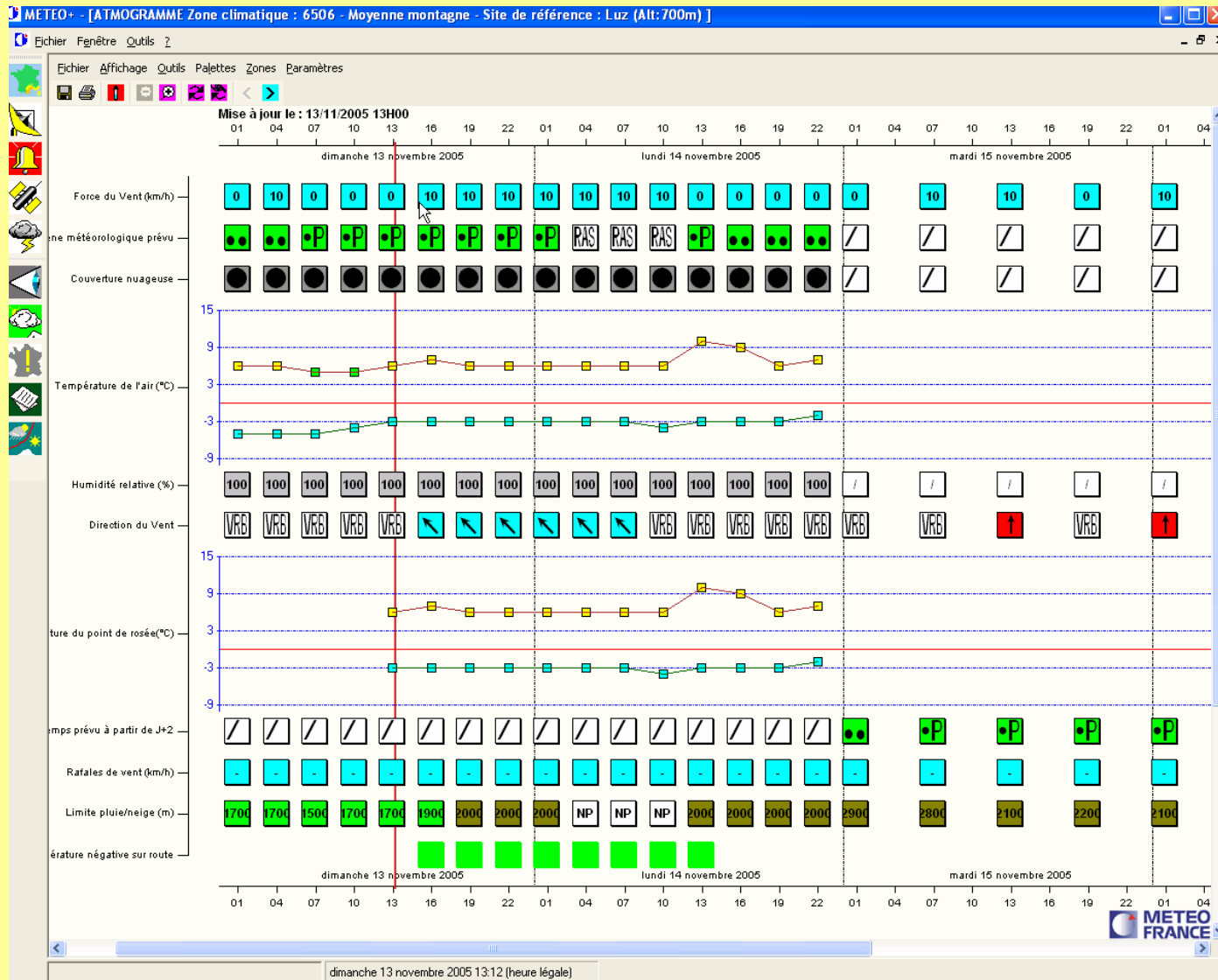
Wednesday, 16 November 05
 Brigitte Bénech, M-Françoise Voidrot

Tenth workshop on Meteorological Operational
 Systems



STORM, specific tool for the Navy

- For the needs of the Navy, new specifications have to be included in this tool “STORM”:
- An improved, complemented aeronautic level
- The access to ECMWF data (global model)



Wednesday, 16 November 05
 Brigitte Bénech, M-Françoise Voidrot

Tenth workshop on Meteorological Operational
 Systems



Exemple d'applicatif suivant les règles de la CEMETER

The screenshot displays the Synergie 4.0.0.b [bigorre] application window. The main interface features a top toolbar with various icons for navigation and editing, and a central workspace. A configuration dialog titled "Edition de la classe Arp1.5 >6 (id ID_Stress_Humain_G15_RR6)" is open, showing the following fields:

- Titre: Arp1.5 >6
- Identifiant: ID_Stress_Humain_G15_RR6 (with an "auto" button)
- Grille: GLOB15
- Elements list:
 - ID_Stress_Humain_G15_Tempe
 - ID_Stress_Humain_G15_Vent
 - ID_Stress_Humain_G15_Pluie_RR6
 - ID_Stress_Humain_G15_Neige_RR6

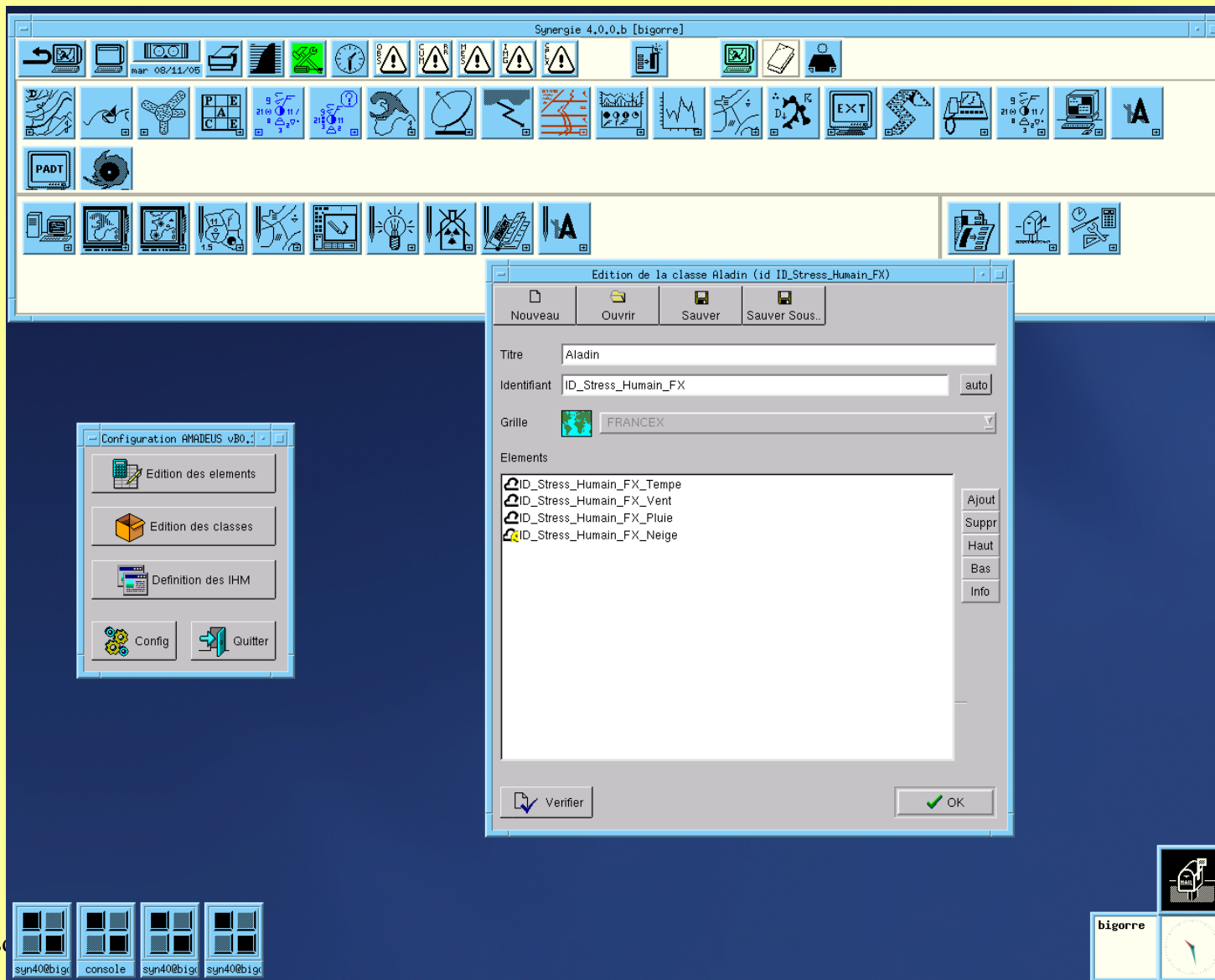
Buttons for "Ajout", "Suppr", "Haut", "Bas", and "Info" are visible on the right side of the elements list. At the bottom of the dialog are "Verifier" and "OK" buttons.

In the bottom-left corner, there is a "Configuration AMADEUS vB0..." panel with buttons for "Edition des elements", "Edition des classes", "Definition des IHM", "Config", and "Quitter".

The system tray at the bottom shows the date and time "Wed Brig" and several taskbar icons, including "syn40@big", "console", and "syn40@big".

In the bottom-right corner, there is a "bigorre" logo and the "METEO FRANCE" logo with the slogan "Mieux un temps d'avance".

Exemple d'applicatif suivant les règles de la CEMETER



Wednes
Brigitte

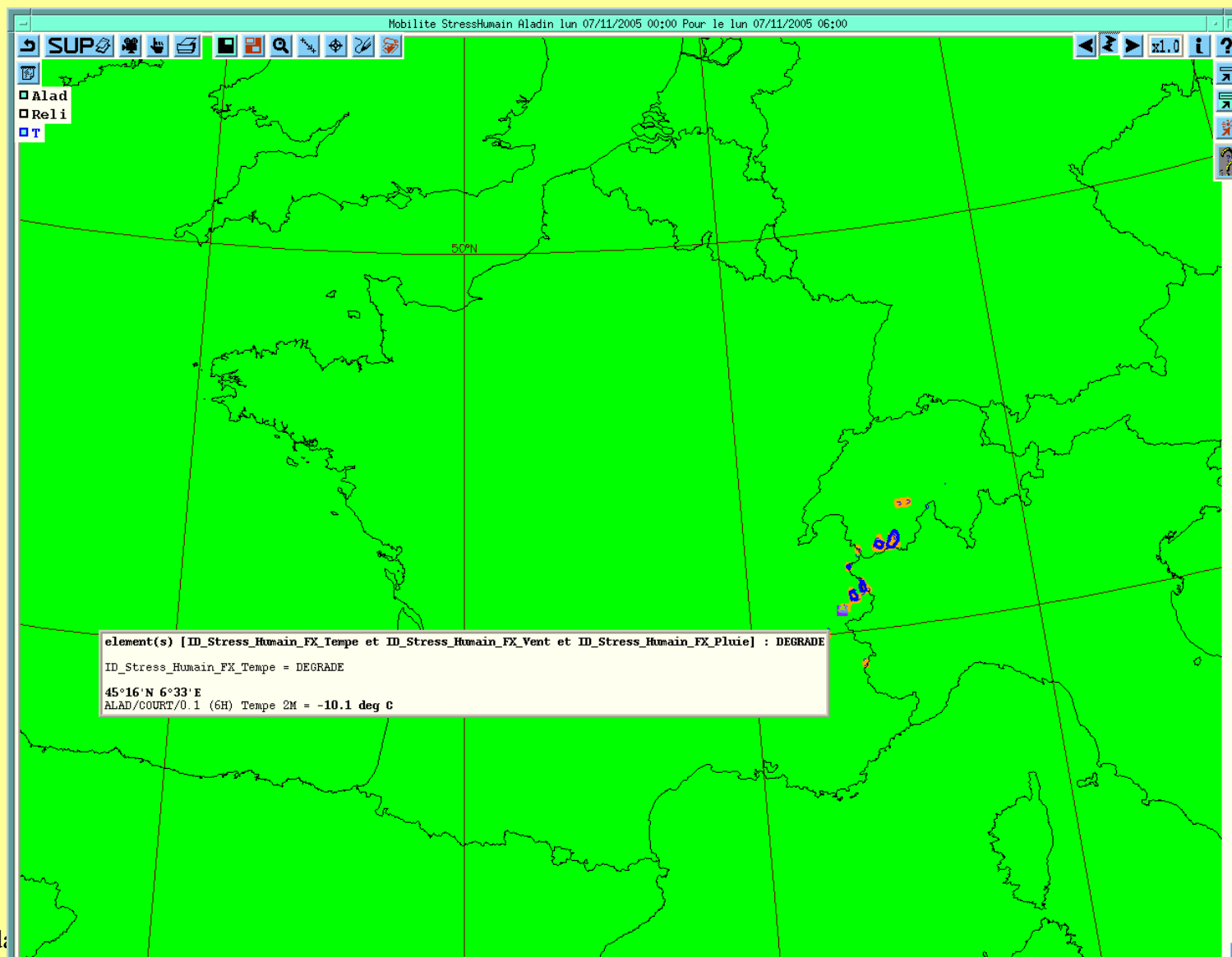


Systems



Toujours un temps d'avance

Exemple d'application suivant les règles de la CEMETER

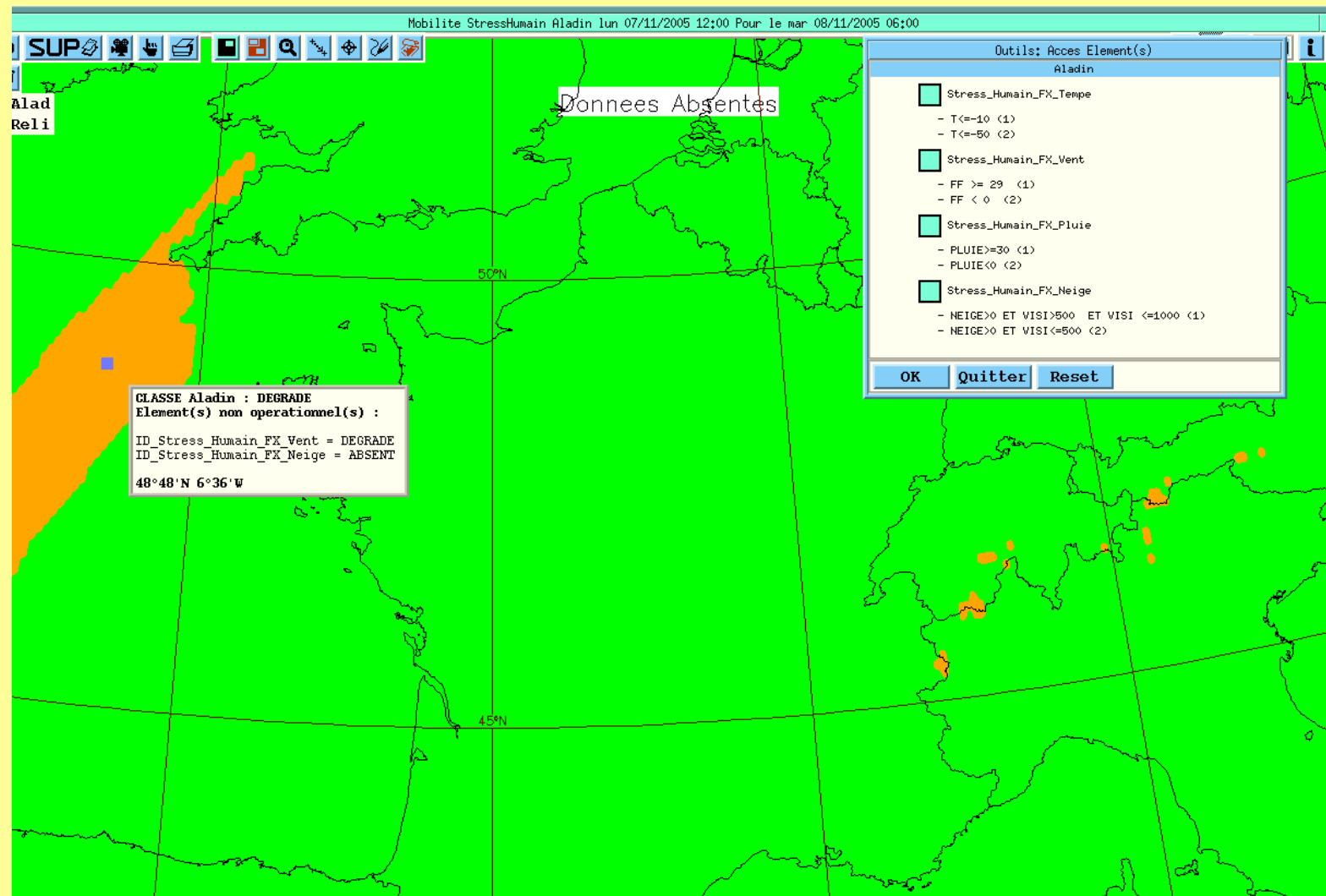


Wednesd:

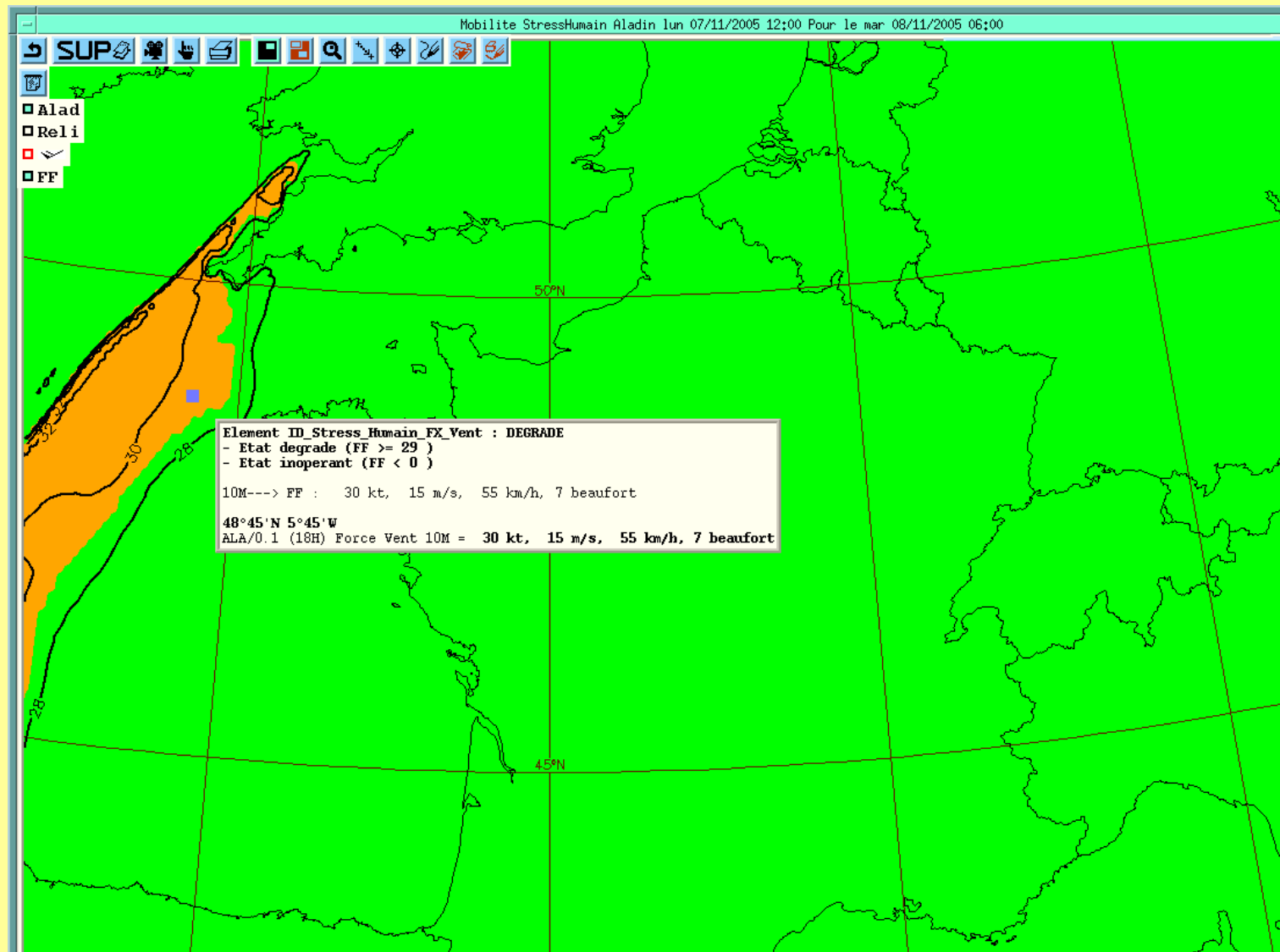
Brigitte Bénech, M-Françoise Voidrot

Systems

Exemple d'applicatif suivant les règles de la CEMETER



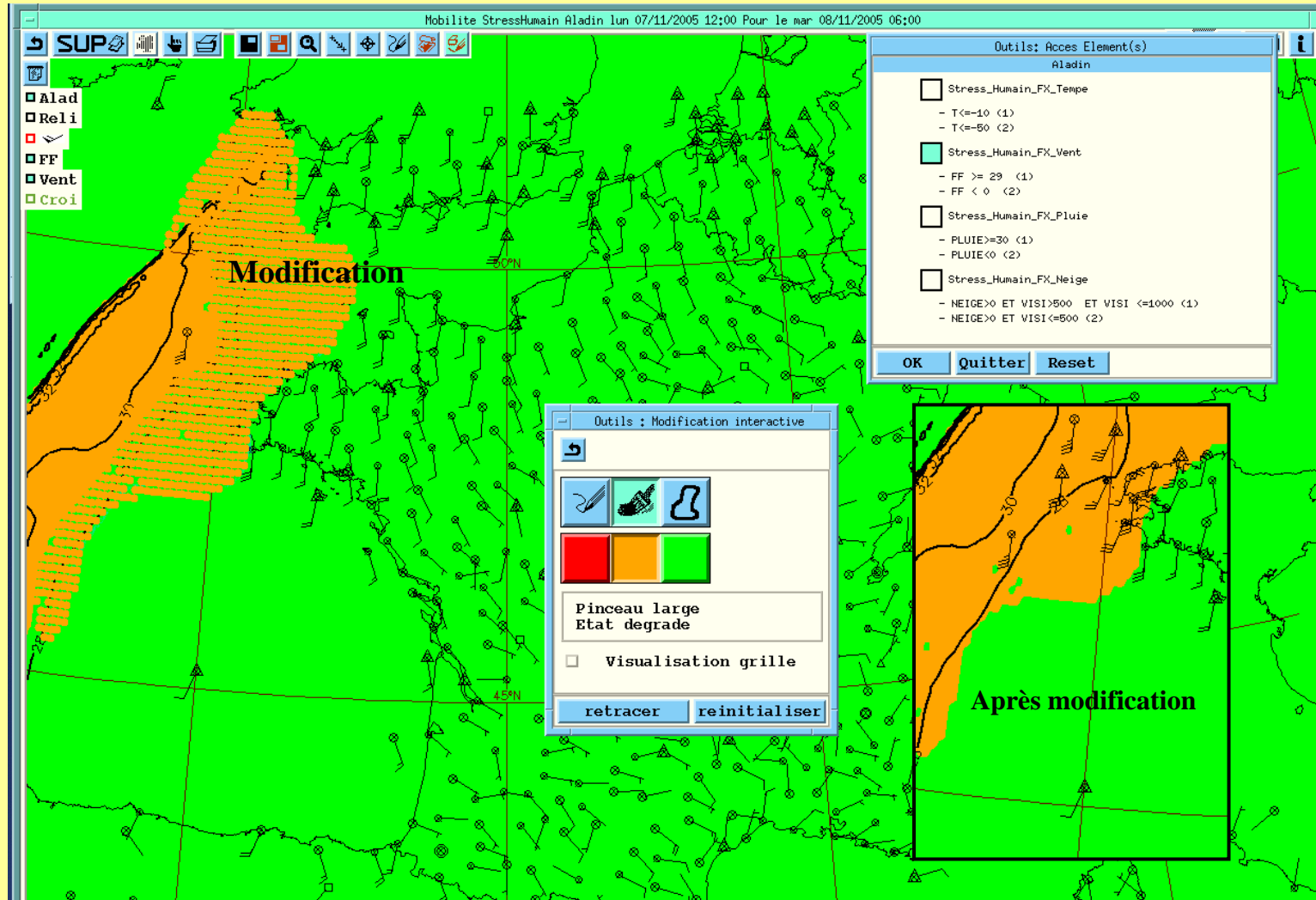
Exemple d'applicatif suivant les règles de la CEMETER



Wednesday, 16 November 05
Brigitte Bénech, M-Françoise Voidrot

Tenth workshop on Meteorological Operational
Systems

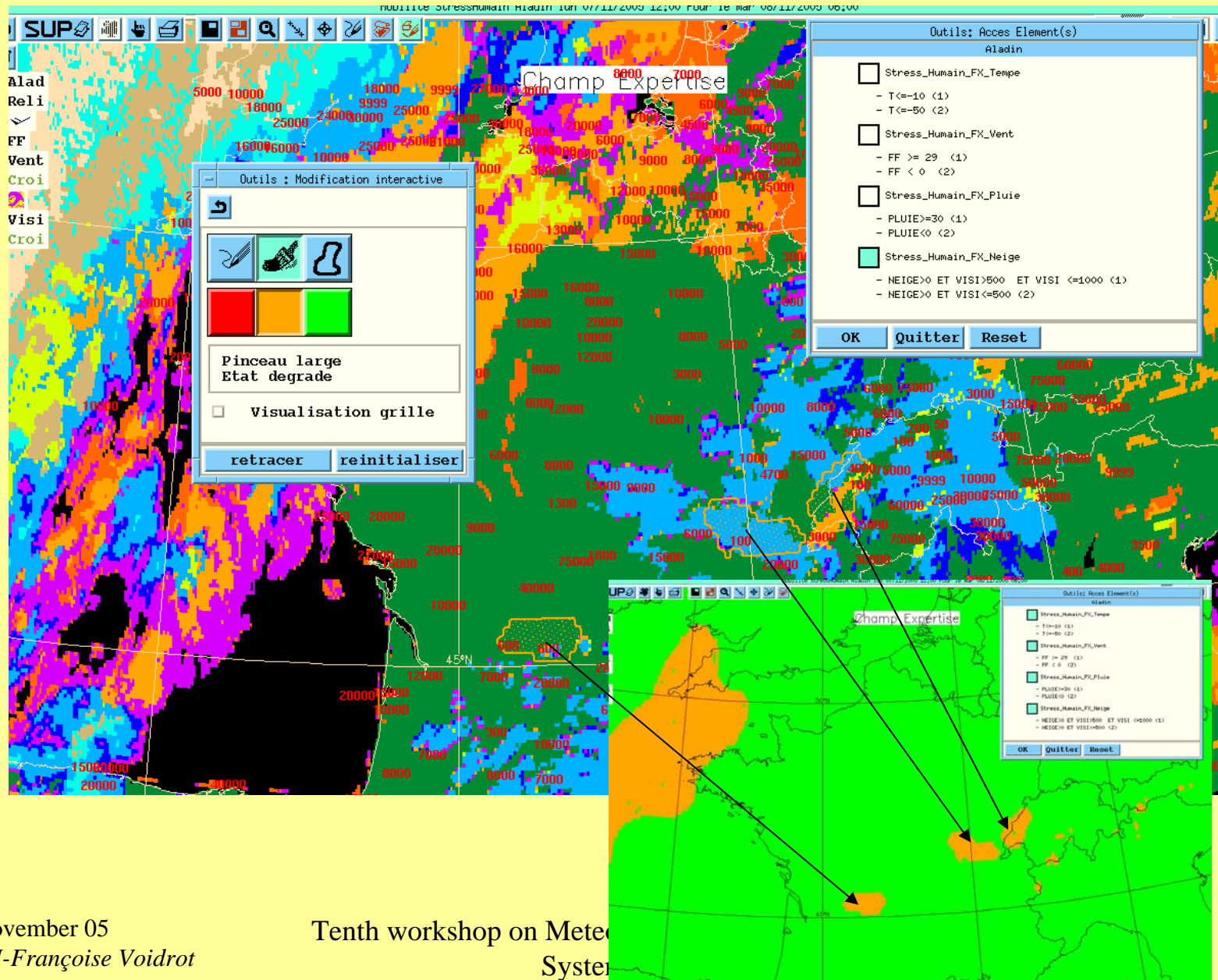
Exemple d'applicatif suivant les règles de la CEMETER



Wednesday, 16 November 05
Brigitte Bénech, M-Françoise Voidrot

Tenth workshop on Meteorological Operational
Systems

Exemple d'applicatif suivant les règles de la CEMETER



Wednesday, 16 November 05
Brigitte Bénech, M-Françoise Voidrot

Tenth workshop on Meteorological
Systems