

# **ESTIMATION OF BIOGENIC NMVOCs EMISSIONS OVER THE BALKAN REGION**

**Poupkou A.<sup>1</sup>, Symeonidis P.<sup>1</sup>, Melas D.<sup>1</sup>,  
Balis D.<sup>1</sup> and Zerefos C.<sup>2,3</sup>**

**<sup>1</sup>Laboratory of Atmospheric Physics, Department of Physics, AUTH**

**<sup>2</sup>Lab. of Climatology and Atmospheric Environment, Fac. of Geology, Univ. of  
Athens**

**<sup>3</sup> National Observatory of Athens**

# GENERAL DESCRIPTION OF THE EMISSION INVENTORY

- ✓ **Estimation of biogenic Isoprene, Monoterpenes and Other VOCs emissions.**
- ✓ **Land use types: Forests, Shrub land, Grassland, Agricultural crops.**
- ✓ **Spatial resolution: 1km.**
- ✓ **Temporal resolution: Typical diurnal variation for every month of a year.**

# GENERAL METHODOLOGY (1)

$$\text{Flux } (\mu\text{g-C m}^{-2} \text{ yr}^{-1}) = \int \varepsilon \cdot D \cdot \gamma \, dt$$

$\varepsilon$  = emission potential ( $\mu\text{g-C g}^{-1} \text{ h}^{-1}$ ) of species

$D$  = foliar biomass density ( $\text{g m}^{-2}$ )

$\gamma$  = environmental correction factor (unit less) (*Guenther et al., 1993*)

Isoprene :

$$\gamma_{\text{iso}} = C_{\text{Liso}} \cdot C_{\text{Tiso}}$$

$$C_{L_{\text{iso}}} = \frac{\alpha c_{L1} L}{\sqrt{1 + \alpha^2 L^2}} \leftrightarrow \begin{array}{l} L = \text{Photosynthetically Active Radiation flux} \\ (\mu\text{mol photons (400-700nm) m}^{-2} \text{ s}^{-1}) \text{ (PAR)} \end{array}$$

$$C_{T_{\text{iso}}} = \frac{\exp(C_{T1}(T - T_s) / RT_s T)}{1 + \exp(C_{T2}(T - T_M) / RT_s T)} \leftrightarrow \begin{array}{l} T = \text{Leaf temperature (K)} \end{array}$$

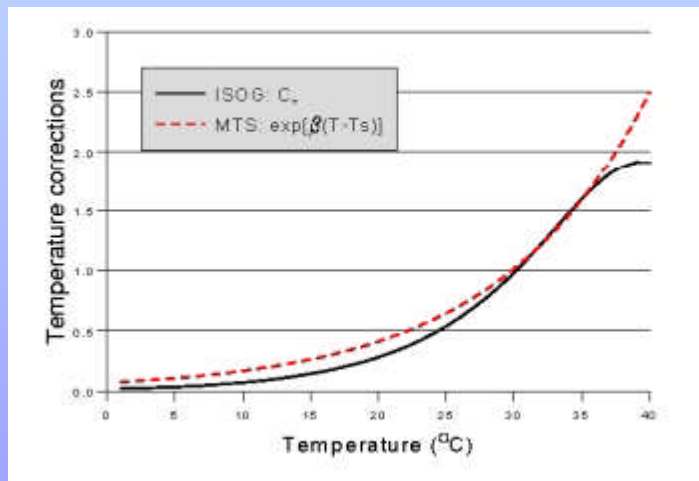
# GENERAL METHODOLOGY (2)

## Monoterpenes and OVOCs :

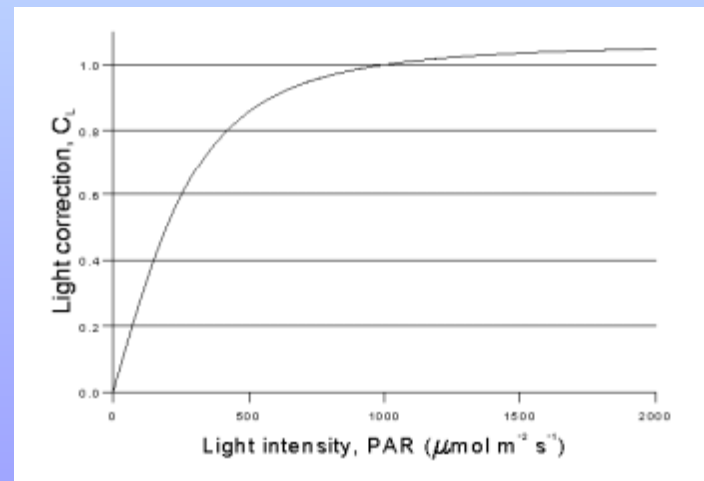
$$\gamma_{\text{mts}} = \exp(\beta * (T - T_s))$$



T = Leaf temperature (K)



Temperature dependency of biogenic NMVOCs emissions



Light dependency of biogenic NMVOCs emissions

*(EMEP/CORINAIR Emission Inventory Guidebook)*

# **GIS TECHNOLOGY**

**A Geographic Information System was used to integrate:**

- (i) Satellite land-use data**
- (ii) Vegetation type/species emission potentials and biomass densities**
- (iii) Climatic temperature data**
- (iv) Photosynthetically Active Radiation flux data**

**in order to produce the spatially and temporally resolved biogenic NMVOCs emission inventory over the Balkan Region.**

# LAND USE DATABASE

## ✓ Global Land Cover Characterization database (*USGS – UNL – JRC*)

- **Data of 1-km nominal spatial resolution based on 1-km AVHRR data spanning April 1992 through March 1993.**
- **Use of the Seasonal Land Cover Regions classification legend.**
- **Calculations performed for 126 land use types consisted of one or more vegetation species / types.**

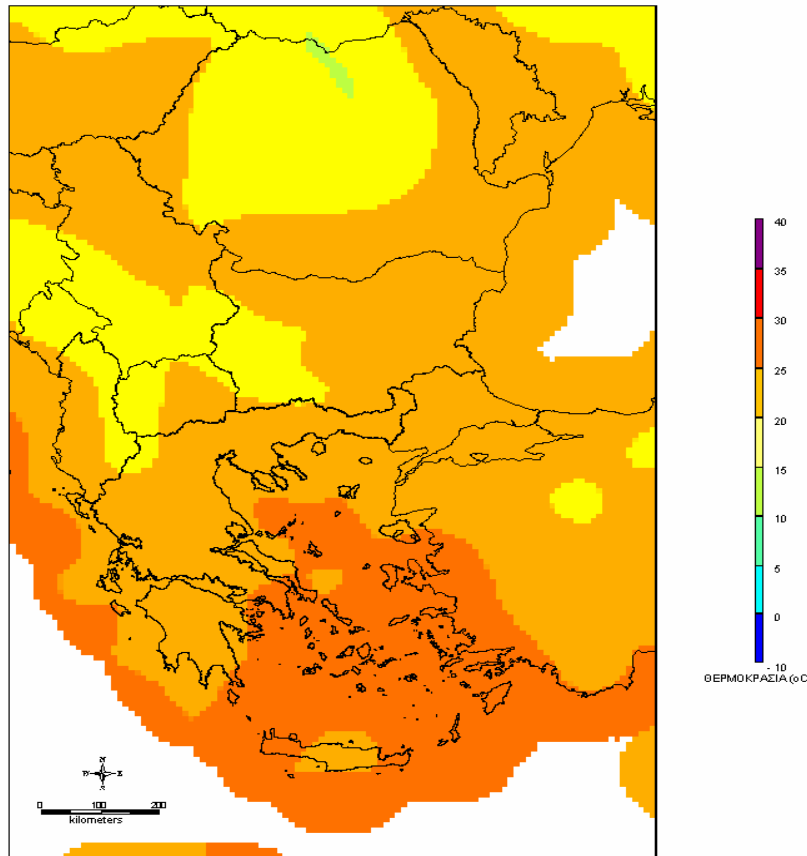
# EMISSION POTENTIALS AND BIOMASS DENSITIES SOURCES

- **EMEP/CORINAIR Emission Inventory Guidebook**, 2002.
- **Guenther**, A., Hewitt, N., Erickson, D., Fall, R., Geron, C., Graedel, T., Harley, P., Klinger, L., Lerdau, M., McKay, W., Pierce, T., Scholes, B., Steinbrecher, R., Tallamraju, R., Taylor, J. and Zimmerman, P., 1995. A global model of natural volatile organic compound emissions. *J. Geophys. Res.*, 100, pp. 8873-8892.
- **Guenther**, A., Zimmerman, P. and Wildermuth, M., 1994. Natural volatile organic compound emission rate estimates for U.S. woodland landscapes. *J. Geophys. Res.*, 28, pp. 1197-1210.
- **Geron**, C., Guenther, A. and Pierce, T., 1994. An improved model for estimating emissions of volatile organic compounds from forests in the Eastern United States. *J. Geophys. Res.*, 99, pp. 12773-12792.
- **Lamb**, B., Gay, D., Westberg, H. and Pierce, T., 1993. A biogenic hydrocarbon emission inventory for the U.S.A. using a simple forest canopy model. *Atmospheric Environment*, 27, pp. 1673-1690.
- **Levis**, S., Wiedinmyer, C., Bonan, G. B. and Guenther A., 2003. Simulating biogenic volatile organic compound emissions in the Community Climate System Model. *J. Geoph. Res.*, 108, No. D21, 4659, doi:10.1029/2002JD003203.
- **Parra**, R., Gasso, S. and Baldasano, J.M., 2004. Estimating the biogenic emissions of non-methane volatile organic compounds from the North Western Mediterranean vegetation of Catalonia, Spain. *Science of the Total Environment*, 329, pp. 241–259.

➤ **Emission potentials and biomass densities assigned for each land use type for every month of a year.**

# TEMPERATURE DATABASE

✓ CRU Global Climate Dataset (*IPCC Data Distribution Centre*)



Mean Temperature (°C) - July

- Monthly Climatic Temperature data of 0.5° latitude by 0.5° longitude resolution for the period 1981-1990.
- Use of the inverse distance interpolation method to increase the spatial resolution of temperature data to 10 km.
- Temperature diurnal variation simulated by a step function: temperature has minimum value at local sunrise, increases hourly until it reaches a peak value 2 hours after local afternoon and decreases again to reach minimum value.



# PHOTOSYNTHETICALLY ACTIVE RADIATION

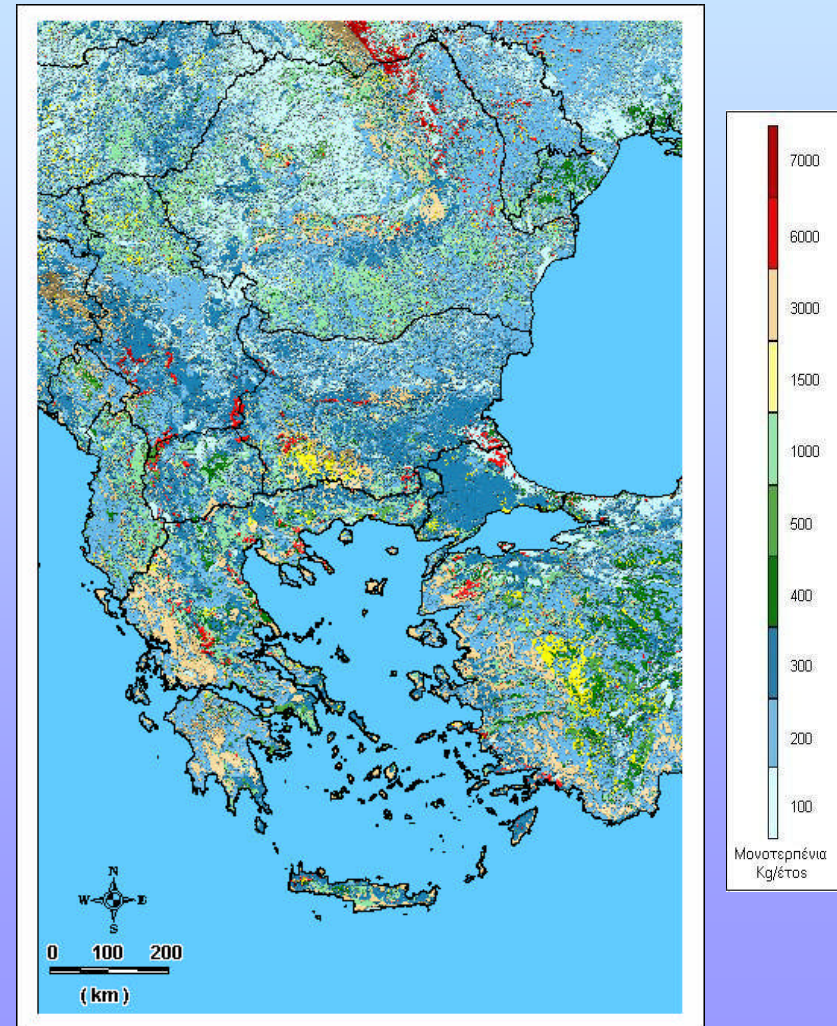
- ✓ PAR calculated using the Tropospheric Ultraviolet and Visible model (TUV version 4.0) (*Madronich, 1993*)
  - Calculations of typical diurnal variation of PAR for every month of a year at selected points covering the study area.
  - Spatial resolution of calculations = 50 km increased to 10 km using the inverse distance interpolation method.
  - Elevation data from the Global Land One-Kilometer Base Elevation (GLOBE) Digital Elevation Model (DEM) of 30'' spatial resolution (*National Geophysical Data Center of NOAA*).
  - Total ozone = 300 D.U.
  - Cloudless sky.
  - Aerosol optical depth = 0.38
  - Use of optical properties for continental type aerosols.

# ANNUAL BIOGENIC NMVOCs EMISSIONS

## Isoprene (kgr-C/year)

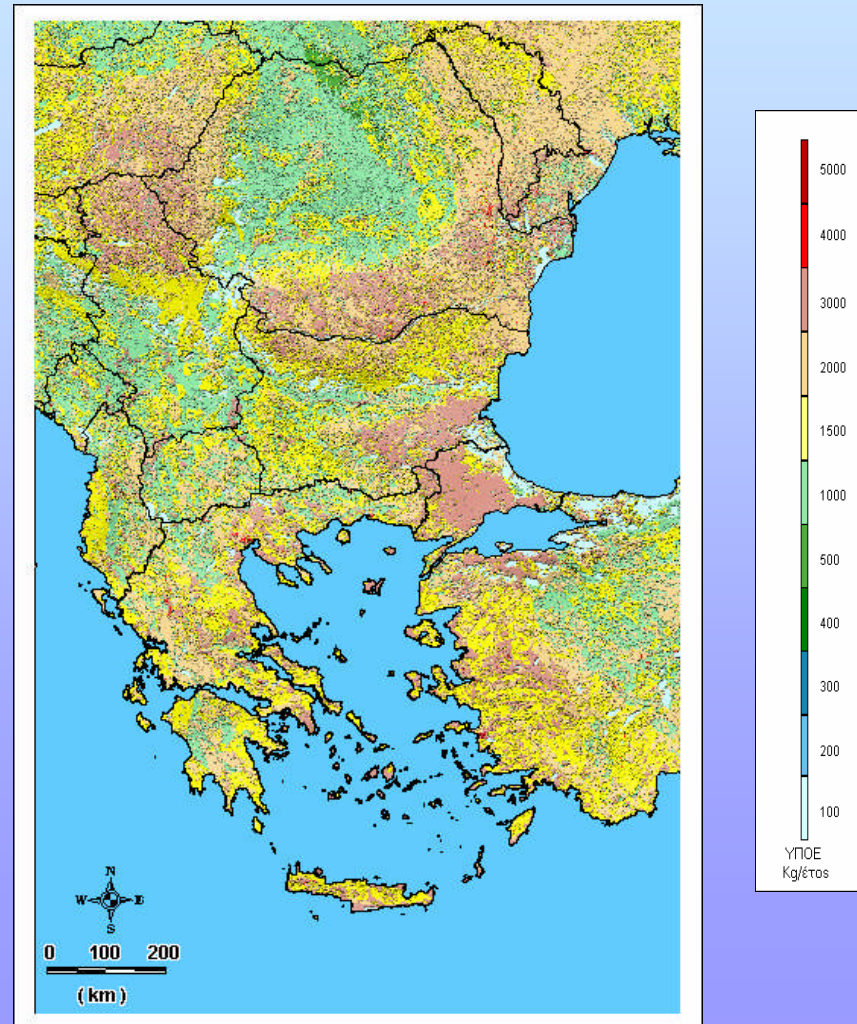


## Monoterpenes (kgr-C/year)



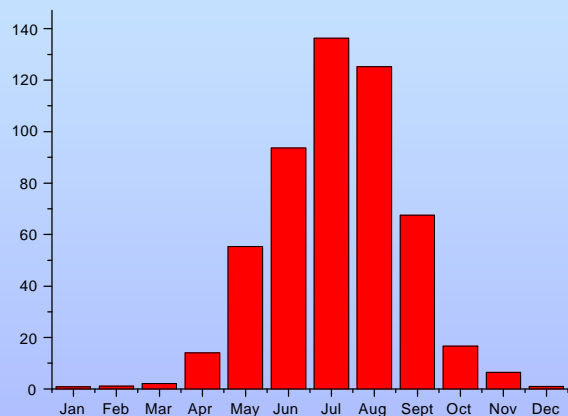
# ANNUAL BIOGENIC NMVOCs EMISSIONS

**OVOCs (kgr-C/year)**

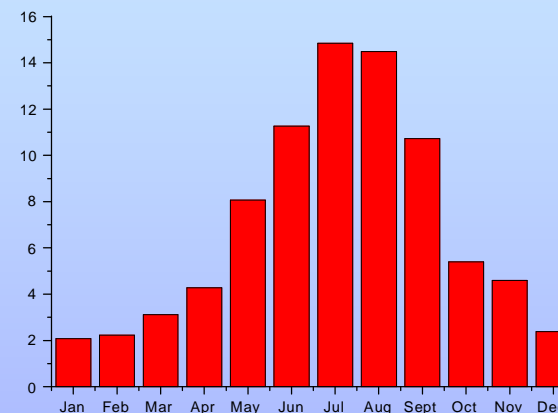


# SEASONAL VARIATION OF BIOGENIC NMVOCs EMISSIONS OVER GREECE

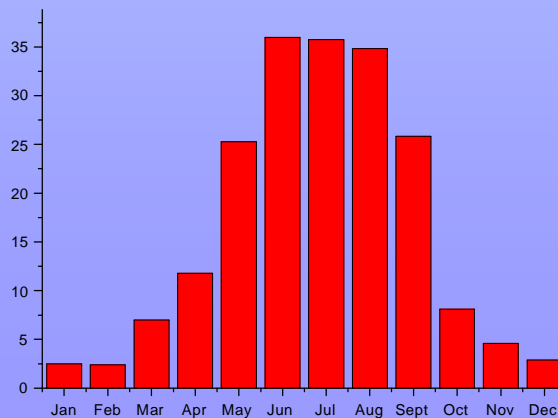
## Isoprene (Gg-C)



## Monoterpenes (Gg-C)

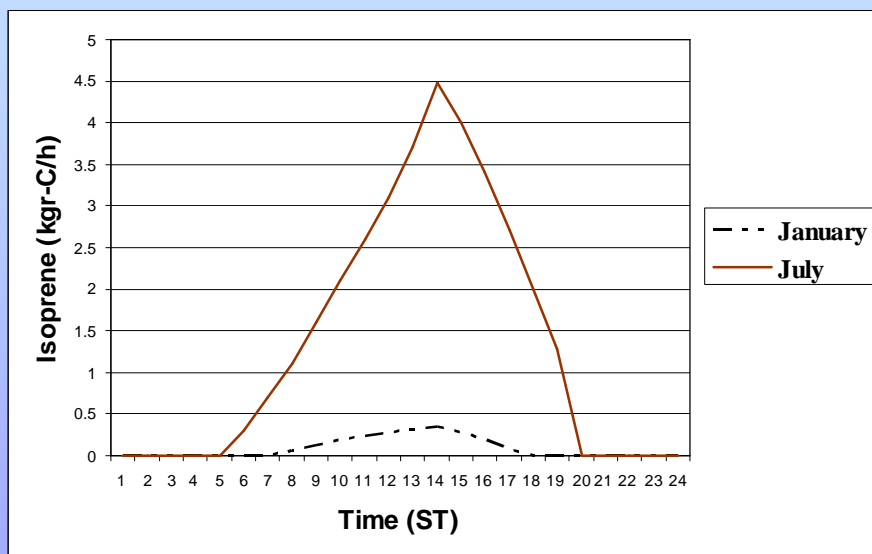


## OVOCs (Gg-C)



# DIURNAL VARIATION OF BIOGENIC NMVOCs EMISSIONS

## Southern Greece



## Central Greece

